

Maverick Floor Plan

In Estates at Saucon Valley from \$1,049,900

PLAN DETAILS

Pricing from \$1,049,900

5 Beds
 4.5 Baths
 4,113 Sq Ft
 2 Story
 3 Car Garage



Traditional Elevation

The Maverick is an architectural gem that embodies modern farmhouse style with its spacious 4100 sq ft. floor plan. Ideal for multi-generational living, this home boasts multiple common areas and bedrooms on both floors, allowing for maximum comfort and convenience. Its sleek, contemporary design seamlessly integrates function and style, making it the perfect place for families to create lasting memories. Step into the charming Foyer and be welcomed into its magnificent living spaces. The Kitchen features ample counter space, a large island with seating, and a walk-in Pantry. The nearby Great Room is anchored by a cozy gas fireplace, windows with backyard views, and opens to a formal Dining Room. The Family Room is a luxurious escape with cathedral ceilings, a sliding door leading to ... Read More at tuskeshomes.com

PLAN FEATURES

5 Bedrooms
 4.5 Bathrooms
 3-Car Garage
 Starting at 4133 Square Feet
 Granite or Quartz Kitchen Countertops
 Stainless Steel Double Oven, Range,
 Microwave, and Dishwasher
 Great Room with Gas Fireplace
 Family Room with Gas Fireplace and
 Cathedral Ceiling
 Study
 Mudroom with Walk-in Closet
 1st Floor Guest Suite
 Private Owner's Suite
 2nd Floor Loft
 2nd Floor Laundry Room

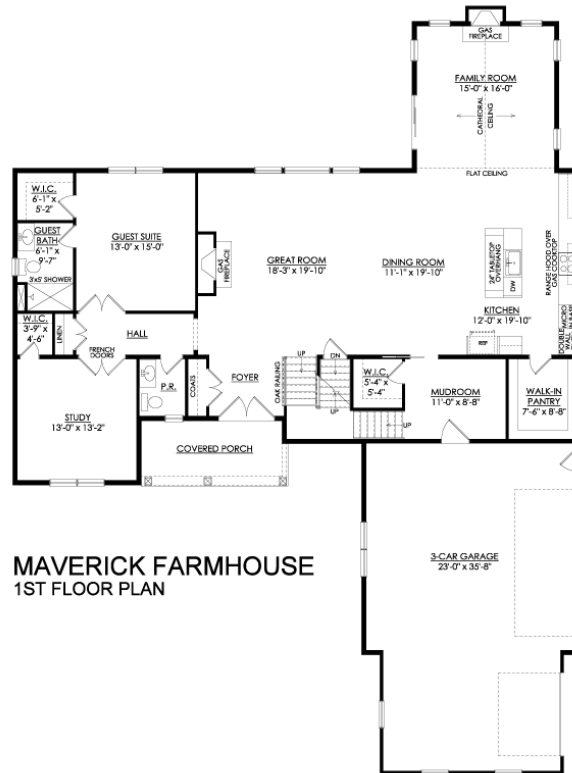
Maverick Floor Plan

In Estates at Saucon Valley from \$1,049,900



Maverick Floor Plan

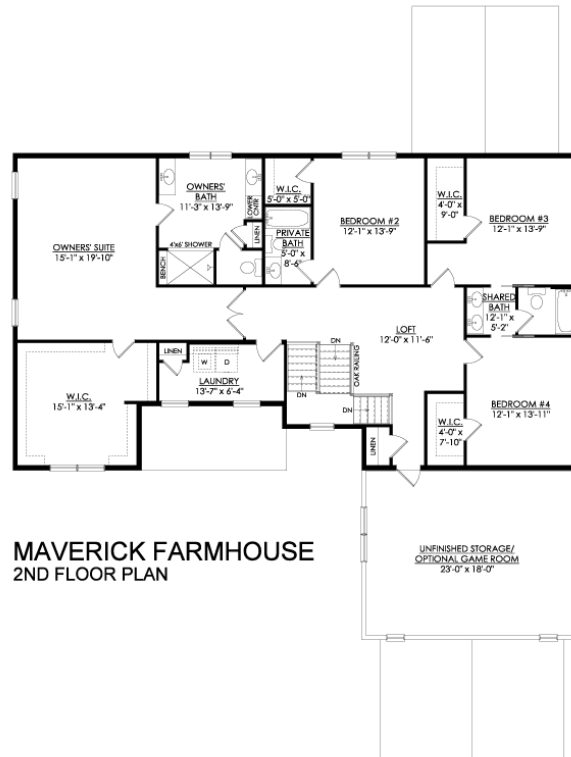
In Estates at Saucon Valley from \$1,049,900



MAVERICK FARMHOUSE
1ST FLOOR PLAN

Maverick Floor Plan

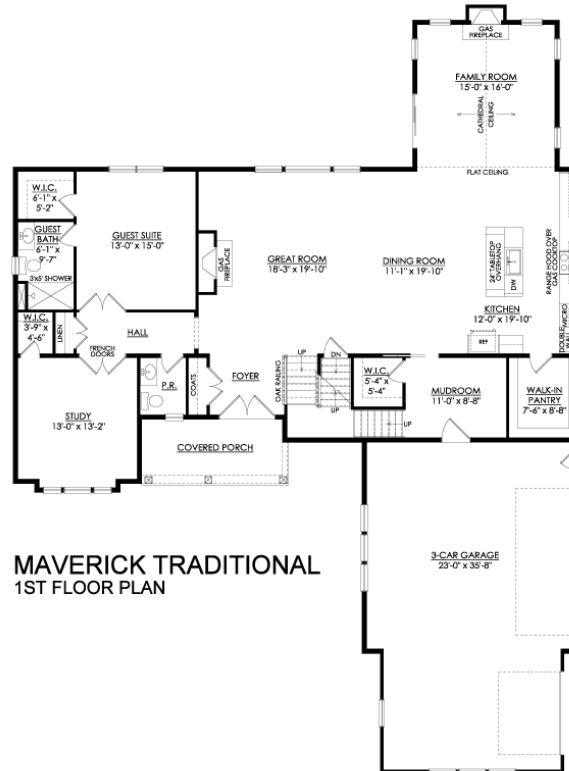
In Estates at Saucon Valley from \$1,049,900



MAVERICK FARMHOUSE
2ND FLOOR PLAN

Maverick Floor Plan

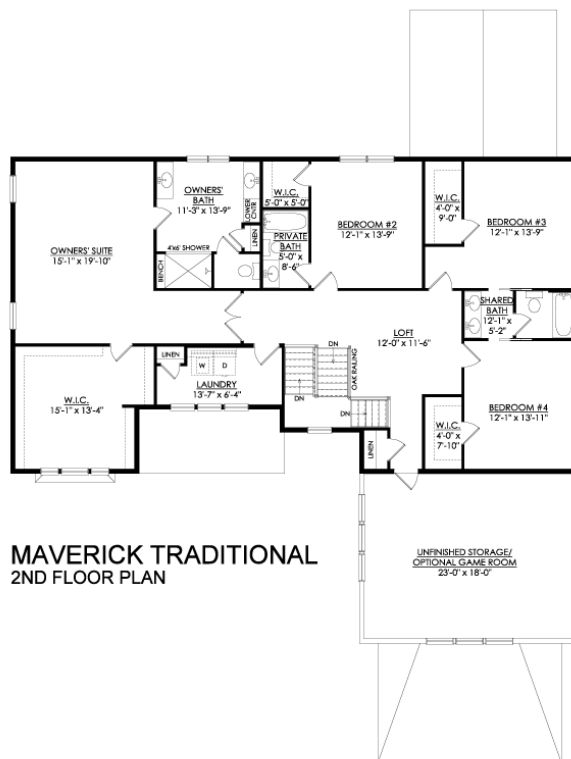
In Estates at Saucon Valley from \$1,049,900



MAVERICK TRADITIONAL
1ST FLOOR PLAN

Maverick Floor Plan

In Estates at Saucon Valley from \$1,049,900



MAVERICK TRADITIONAL
2ND FLOOR PLAN