

Morgan Floor Plan

In The Enclave at Bushkill from **\$749,900**

PLAN DETAILS

Pricing from **\$749,900**

4 Beds 2.5 Baths 2,648 Sq Ft

2 Story 2 Car Garage



Traditional Side Entry Elevation

Designed with functionality in mind, the Morgan features a flowing, open-concept Kitchen, Dining Nook, and Great Room that are the heart of this home. As you enter through the 2 Car Garage, you'll find a Mudroom that's perfect for dropping off items like shoes, coats, or anything else you'd prefer to store. Just beyond, the expansive main living area awaits. Windows line the wall of the Great Room, and just beyond is a beautiful Kitchen that will please the pickiest of home chefs. A guest Foyer, Study, Dining Room/Flex Space, and Powder Room round out the first floor of this gorgeous home. Upstairs you'll find a large Owner's Suite with two walk-in closets and a private Owner's Bath that's perfect for getting away from it all. The remaining three Bedrooms all have their own walk-in closets ... Read More at tuskeshomes.com

PLAN FEATURES

4 Bedrooms
2.5 Bathrooms
2-Car Garage
Starting from 2,648 Sq. Ft
2nd Floor Owner's Suite with Two Walk-In Closets and Private Bath
Granite or Quartz Countertops
Stainless Steel Range / Over Microwave, and

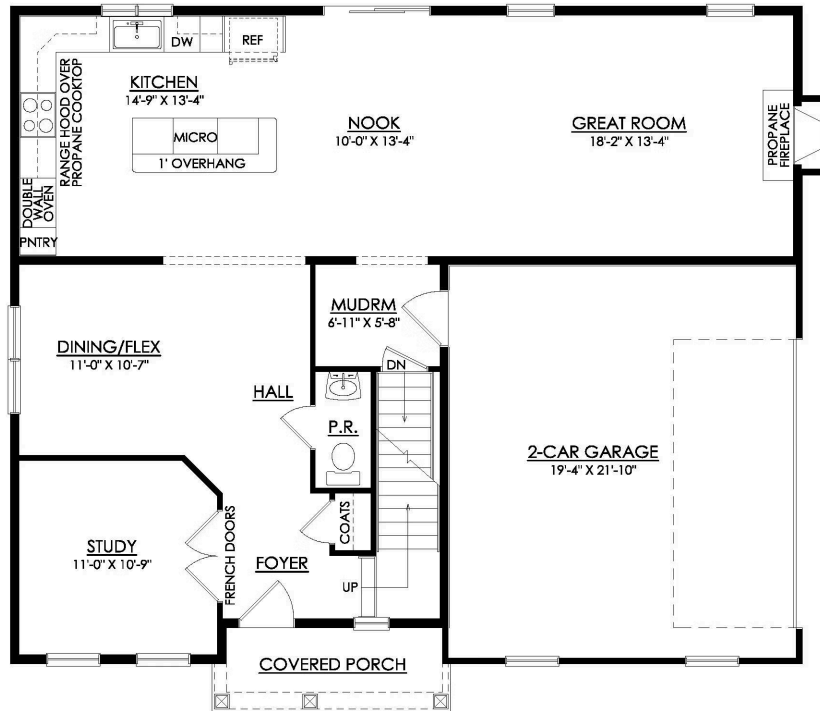
Morgan Floor Plan

In The Enclave at Bushkill from **\$749,900**



Morgan Floor Plan

In The Enclave at Bushkill from \$749,900

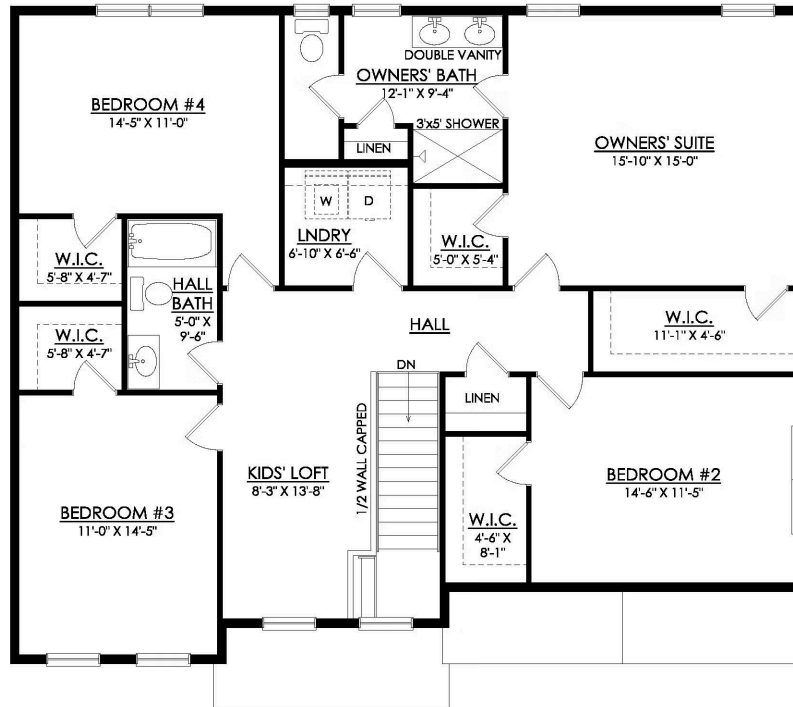


MORGAN COUNTRY
STARTING AT 2648 SF
MAPLE STREET AT GREENLEAF

1ST FLOOR PLAN

Morgan Floor Plan

In The Enclave at Bushkill from **\$749,900**



MORGAN COUNTRY
STARTING AT 2648 SF
MAPLE STREET AT GREENLEAF

2ND FLOOR PLAN



Morgan Floor Plan

In The Enclave at Bushkill from **\$749,900**



Morgan Floor Plan

In The Enclave at Bushkill from **\$749,900**