






# 36 Reserve Drive #RE-23

Drums, PA 18222

## HOME DETAILS

 3 Beds    
  2.0 Baths    
  1,788 Sq Ft  
 2 Story    
  2 Car Garage



RE-23 Elevation



RE-23  
Rendering

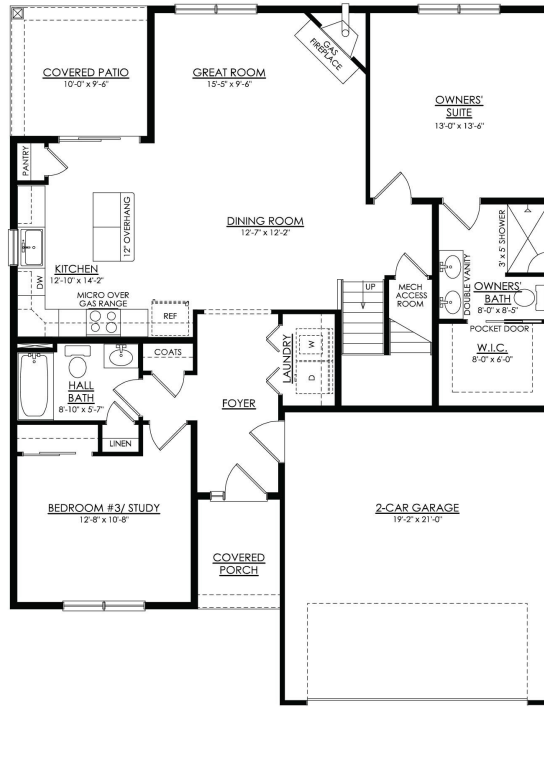
**MOVE-IN READY HOME!**The Laurel is a maintenance-free patio home design offered at our Sand Springs community. Entering this home through the covered front porch, a 1st floor laundry closet, full Bathroom, and a Bedroom that could double as a Study, and door leading to the 2-car garage are just off the Foyer. The open and interconnected Dining Room, Great Room with corner fireplace, and Ki... Read More at [tuskeshomes.com](http://tuskeshomes.com)

## HOME FEATURES

- 3 Bedrooms
- 2 Bathrooms
- 2-Car Garage
- 1788 Square Feet
- Maintenance Free Living - Monthly HOA Fee includes Lawn Care, Landscaping, Snow Removal, Gutter Cleaning, Trash, and other Exterior Maintenance
- Covered 10' x 9'6" Patio
- Kitchen Island with Overhang for Seating
- Granite Kitchen Countertops
- Spacious Great Room with Corner Gas Fireplace
- Owner's Suite with Walk-in Closet
- Owner's Bath with Double Vanity and 3' x 5' Shower
- Radiant In-Floor Heating in all Bathrooms

# 36 RESERVE DRIVE #RE-23

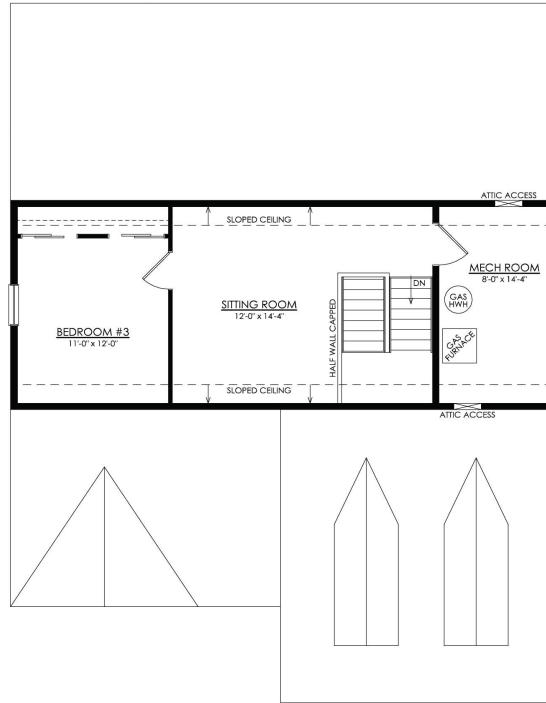
Drums, PA 18222



1ST FLOOR PLAN  
RE23- LAUREL

# 36 RESERVE DRIVE #RE-23

Drums, PA 18222



○ 2ND FLOOR PLAN  
RE23- LAUREL

# 36 RESERVE DRIVE #RE-23

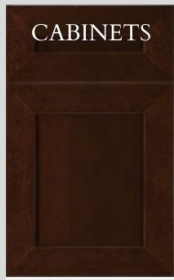
Drums, PA 18222

*Laurel*

Sand Springs  
Homesite #RE-23  
36 Reserve Drive, Drums PA 18222



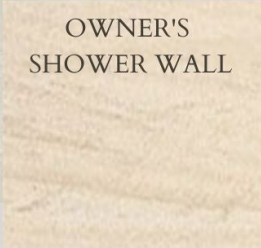
## KITCHEN



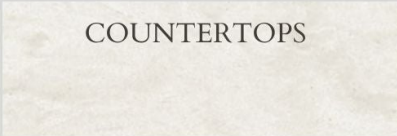
## FLOORING



## BATHROOMS



## LIGHTING



Disclaimer: Although every effort is made to show an accurate representation, actual products may vary in color.