






852 Champions Drive #GR-22B

Drums, PA 18222

HOME DETAILS

 3 Beds
  2.5 Baths
  1,495 Sq Ft
 2 Story
  1 Car Garage



Greens at Sand Springs
Cottage

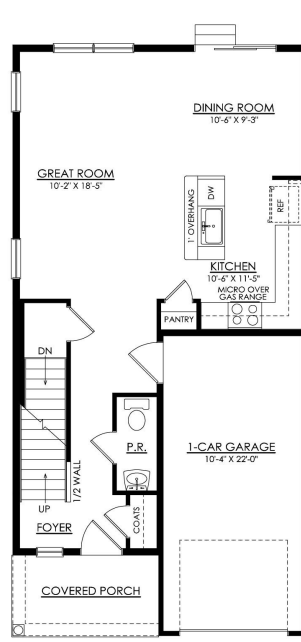
The Greens at Sand Springs are both elegant and spacious, with a floorplan that will make you feel right at home. Upon entering, you'll be welcomed by an open-concept first floor, featuring a Kitchen that has everything you need for cooking and entertaining complete with a large island for extra seating, ample counter space, a convenient pantry. The Great Room and Dining Room are seamless... [Read More at tuskeshomes.com](https://www.tuskeshomes.com)

HOME FEATURES

- 3 Bedrooms
- 2.5 Baths
- 1-Car Garage
- Spacious Owner's Suite with Walk-In Closet and Private Bath
- 8' Basement with Egress Window
- 10' x 12' Pressure Treated Wood Deck with Steps to Grade
- Premium Plus Electrical Package
- Curated Collection - Mono Classic Design
- 2nd Floor Laundry Room

852 CHAMPIONS DRIVE #GR-22B

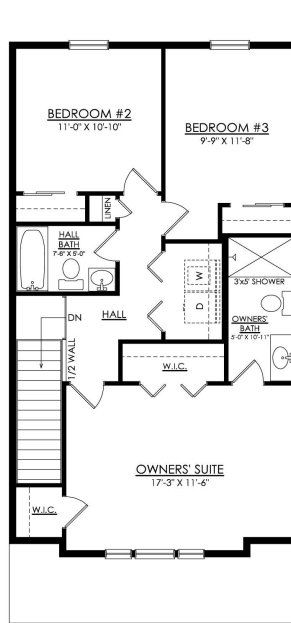
Drums, PA 18222



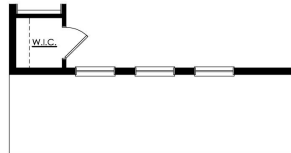
GREENS AT SS- 1ST FLOOR
COTTAGE & CRAFTSMAN
STARTING AT 1495 SF

852 CHAMPIONS DRIVE #GR-22B

Drums, PA 18222



GREENS AT SS- 2ND FLOOR
COTTAGE
STARTING AT 1510 SF



GREENS AT SS- 2ND FLOOR
CRAFTSMAN
STARTING AT 1495 SF