

855 Champions Drive #GR-10B

Drums, PA 18222

HOME DETAILS

3 Beds 2.5 Baths 1,495 Sq Ft

2 Story 1 Car Garage



Greens at Sand Springs Craftsman

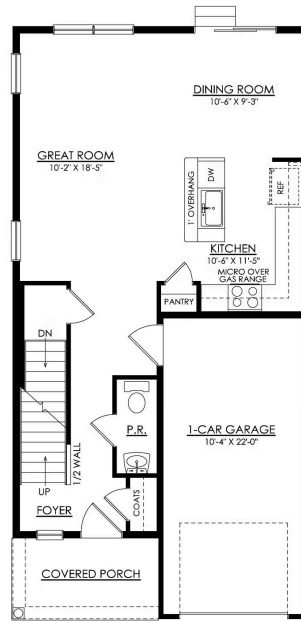
The Greens at Sand Springs are both elegant and spacious, with a floorplan that will make you feel right at home. Upon entering, you'll be welcomed by an open-concept first floor, featuring a Kitchen that has everything you need for cooking and entertaining complete with a large island for extra seating, ample counter space, a convenient pantry. The Great Room and Dining Room are seamles... Read More at tuskeshomes.com

HOME FEATURES

- 3 Bedrooms
- 2.5 Bathrooms
- 1-Car Garage
- Spacious Owner's Suite with Private Bath and Walk-In Closet
- Open-Concept 1st Floor Living Space
- 8' Basement with Egress Window
- 10' x 12' Pressure Treated Wood Deck with Steps to Grade
- Curated Collection - Mono Classic
- Low Maintenance Living
- Premium Plus Electrical Package

855 CHAMPIONS DRIVE #GR-10B

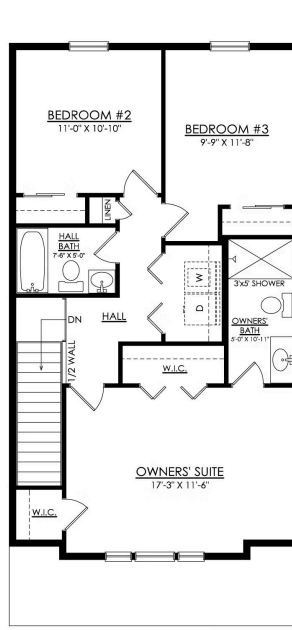
Drums, PA 18222



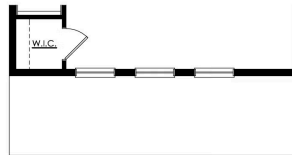
**GREENS AT SS- 1ST FLOOR
COTTAGE & CRAFTSMAN**
STARTING AT 1495 SF

855 CHAMPIONS DRIVE #GR-10B

Drums, PA 18222



**GREENS AT SS- 2ND FLOOR
COTTAGE**
STARTING AT 1510 SF



**GREENS AT SS- 2ND FLOOR
CRAFTSMAN**
STARTING AT 1495 SF