






861 Champions Drive #9A

Drums, PA 18222

HOME DETAILS

-  3 Beds
-  2.5 Baths
-  1,510 Sq Ft
-  2 Story
-  1 Car Garage



Greens at Sand Springs
Cottage

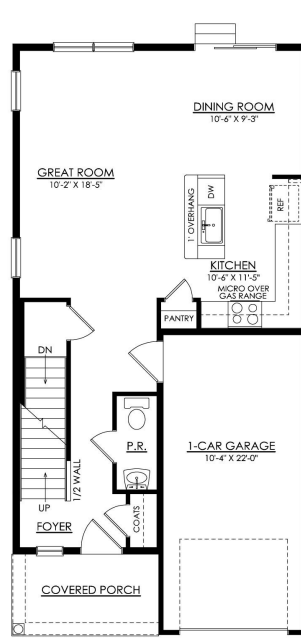
The Greens at Sand Springs are both elegant and spacious, with a floorplan that will make you feel right at home. Upon entering, you'll be welcomed by an open-concept first floor, featuring a Kitchen that has everything you need for cooking and entertaining complete with a large island for extra seating, ample counter space, a convenient pantry. The Great Room and Dining Room are seamless... Read More at tuskeshomes.com

HOME FEATURES

- 3 Beds
- 2.5 Baths
- 1-Car Garage
- Owner's Suite with Private Bath and 3' x 5' Shower
- Open Concept 1st Floor
- 2nd Floor Laundry Room
- 8' Basement with Egress Window
- 10' x 12' Pressure Treated Wood Deck with Steps to Grade
- Premium Plus Electrical Package
- Modern Farmhouse Curated Collection
- Low Maintenance Living including Lawn Care and Snow Removal

861 CHAMPIONS DRIVE #9A

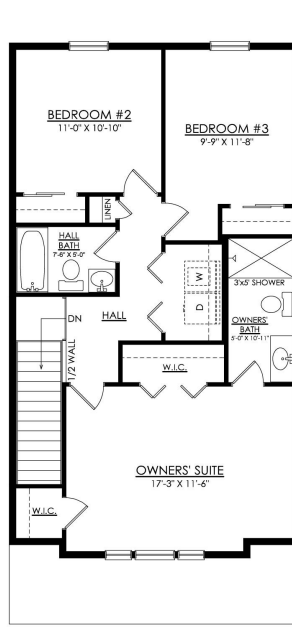
Drums, PA 18222



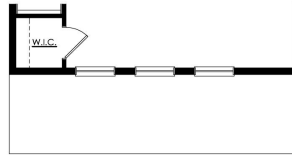
GREENS AT SS- 1ST FLOOR
COTTAGE & CRAFTSMAN
STARTING AT 1495 SF

861 CHAMPIONS DRIVE #9A

Drums, PA 18222



GREENS AT SS- 2ND FLOOR
COTTAGE
STARTING AT 1510 SF



GREENS AT SS- 2ND FLOOR
CRAFTSMAN
STARTING AT 1495 SF