



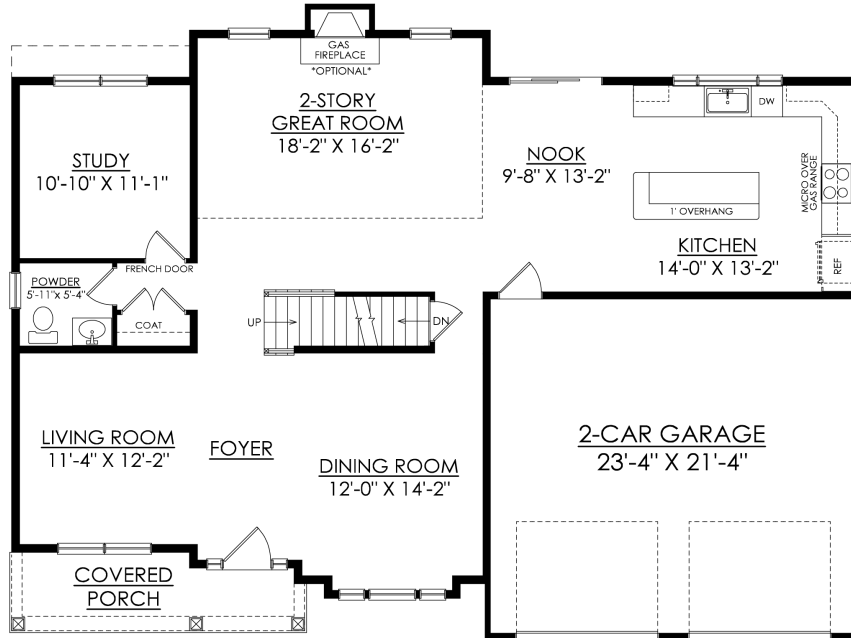
# Breckenridge Floor Plan

In Sand Springs from \$499,900



# Breckenridge Floor Plan

In Sand Springs from \$499,900

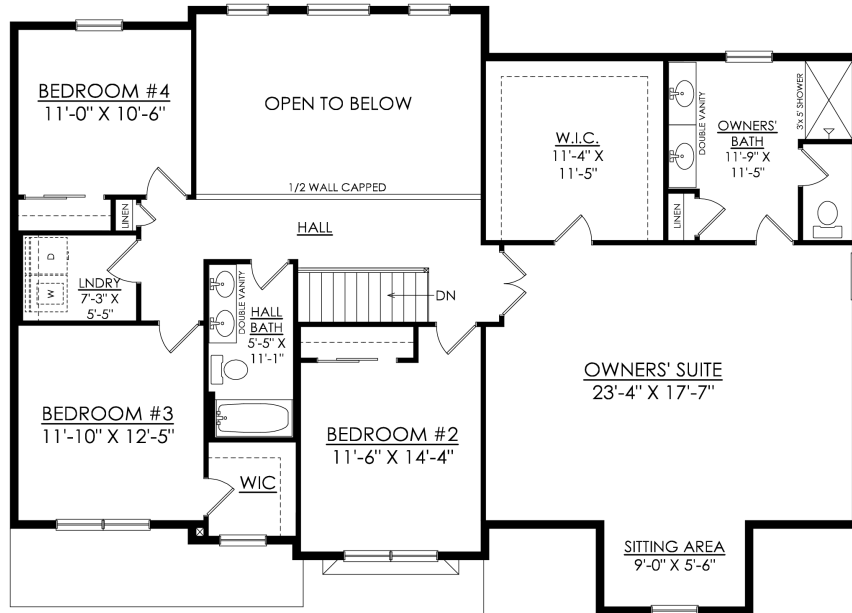


**BRECKENRIDGE TRADITIONAL**  
STARTING AT 2954 SF

**1ST FLOOR PLAN**

# Breckenridge Floor Plan

In Sand Springs from \$499,900

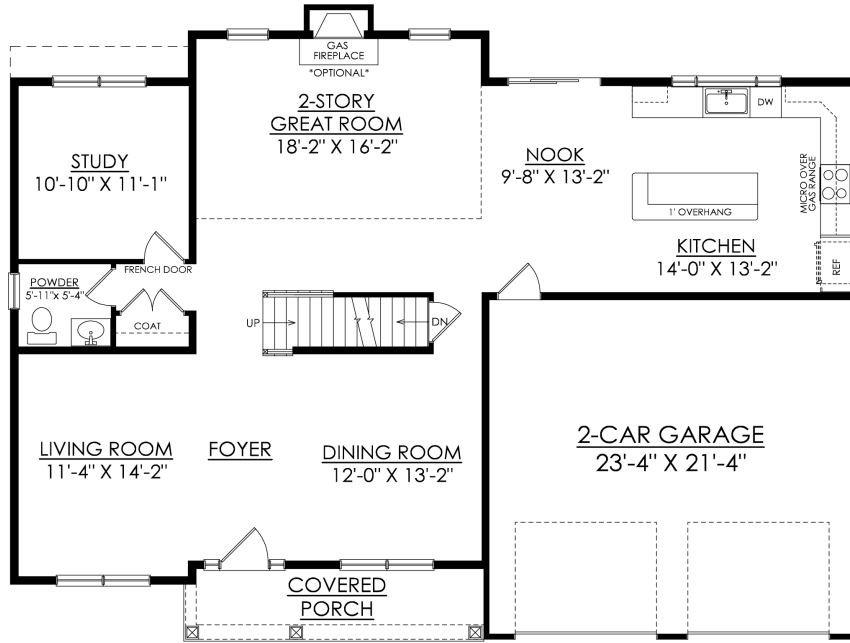


**BRECKENRIDGE TRADITIONAL**  
STARTING AT 2954 SF

**2ND FLOOR PLAN**

# Breckenridge Floor Plan

In Sand Springs from \$499,900

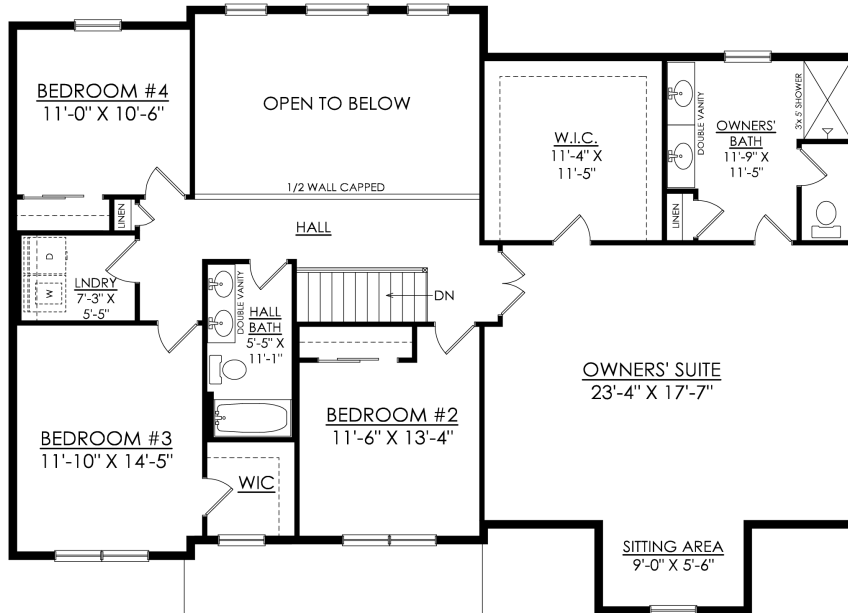


**BRECKENRIDGE FARMHOUSE**  
STARTING AT 2960 SF

1ST FLOOR PLAN

# Breckenridge Floor Plan

In Sand Springs from \$499,900

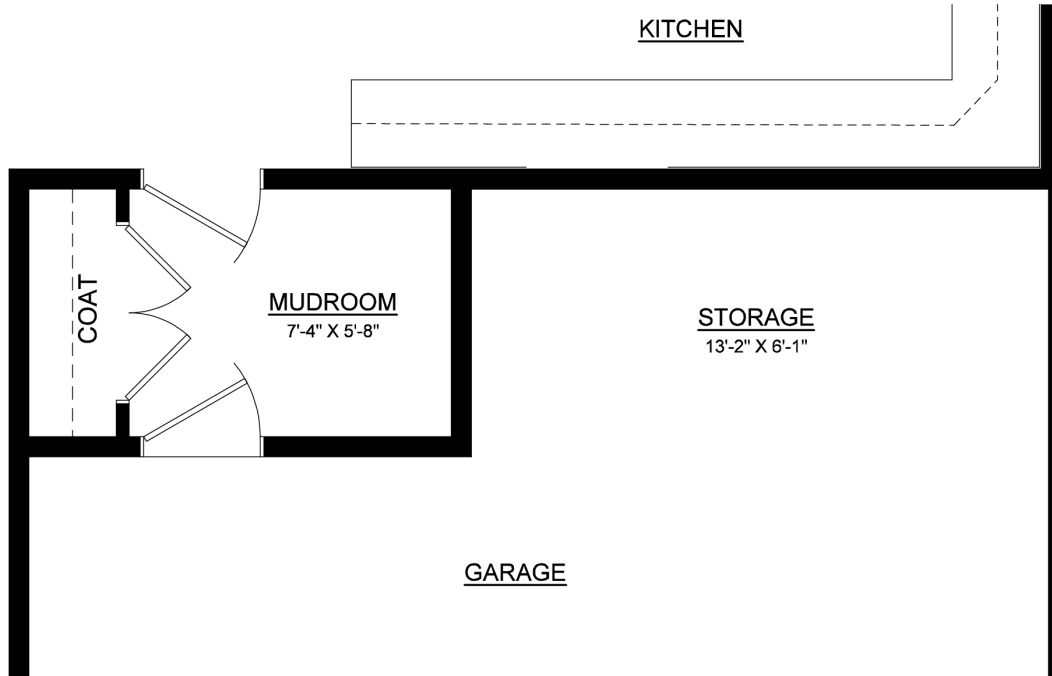


**BRECKENRIDGE FARMHOUSE**  
STARTING AT 2960 SF

**2ND FLOOR PLAN**

# Breckenridge Floor Plan

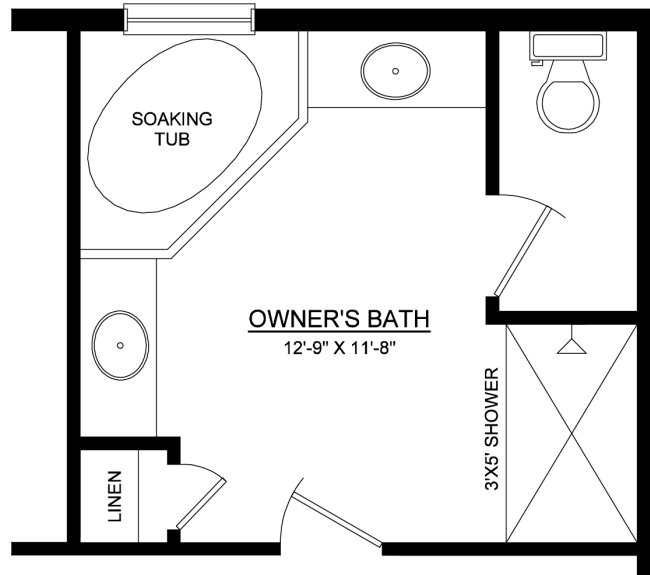
In Sand Springs from \$499,900



## BRECKENRIDGE ADDED MUDROOM

# Breckenridge Floor Plan

In Sand Springs from \$499,900

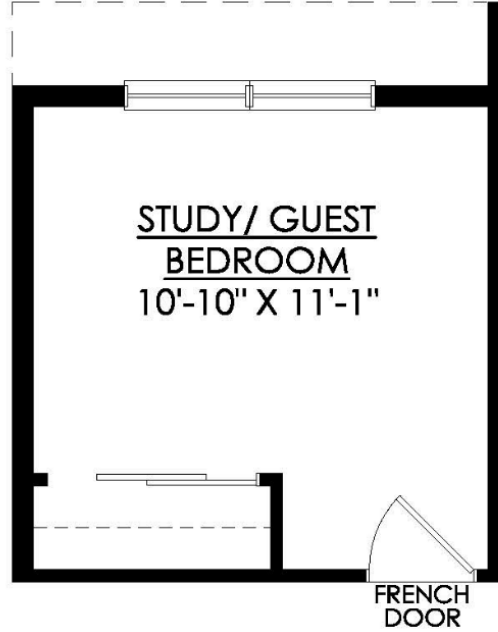


## BRECKENRIDGE OWNERS' BATH W/ SEPARATE TUB



# Breckenridge Floor Plan

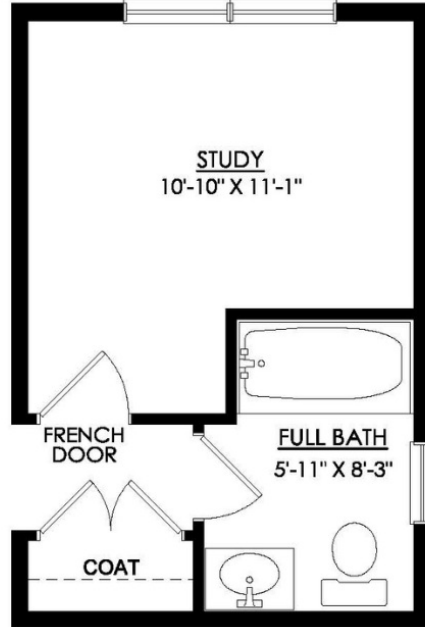
In Sand Springs from \$499,900



## BRECKENRIDGE FIRST FLOOR BEDROOM OPTION #15000

# Breckenridge Floor Plan

In Sand Springs from \$499,900



## BRECKENRIDGE FIRST FLOOR FULL BATH OPTION #30359