






# 2430 Sonoma Lane # 92

Easton, PA 18040

## HOME DETAILS

 2 Beds    
  2.5 Baths    
  1,966 Sq Ft  
 2 Story    
  2 Car Garage



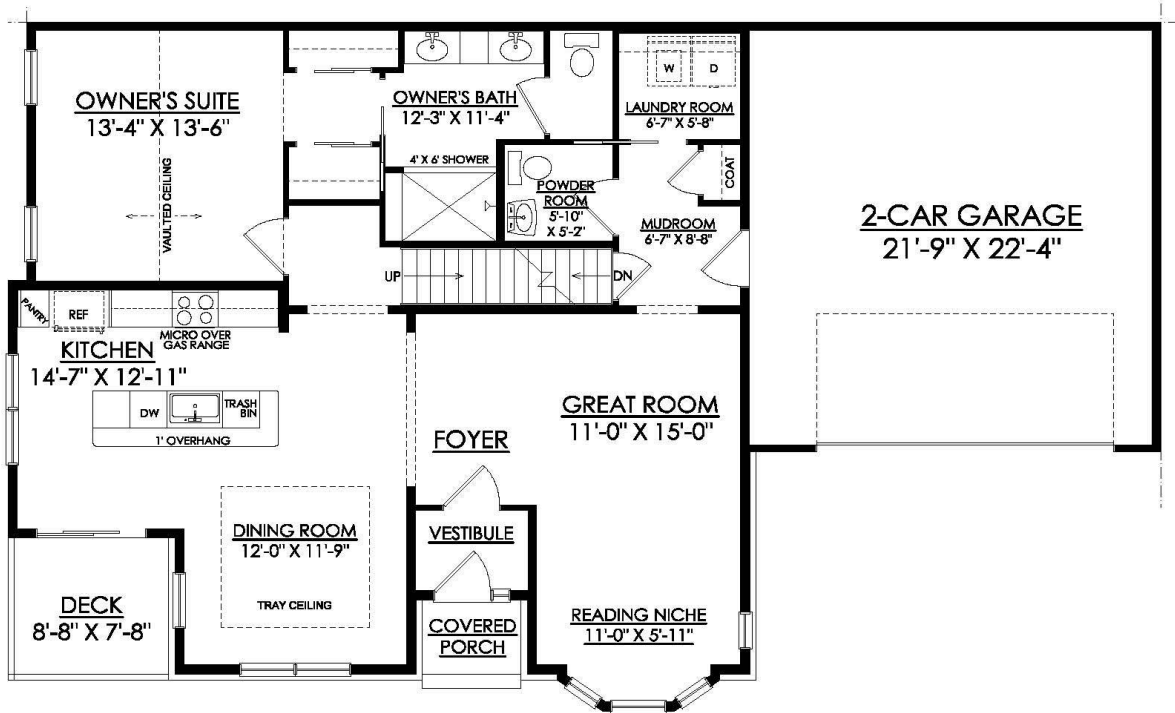
Welcome to the Talia, an elegant 55+ Active Adult home, thoughtfully designed to offer a luxurious lifestyle. Entering through the covered Porch you will find a vestibule that leads to a foyer. Just past the Foyer you will find the heart of the home, a spacious Great Room, which seamlessly flows into a connected Reading Niche illuminated by a wall of windows, providing a cozy retreat bat... Read More at [tuskeshomes.com](http://tuskeshomes.com)

## HOME FEATURES

- 2 Bedrooms
- 2.5 Baths
- 2-Car Garage
- 1st Floor Owner's Suite with Vaulted Ceilings, 2 Closets, and Private Bath
- 8' Basement with Egress Window
- 39" Direct Vent Fireplace with Painted Mantel in 2nd Floor Den
- GE Stainless Steel Fridge with Ice & Water Dispenser Included
- Oak Stained Treads, Painted Risers and Stringers
- Kitchen, Great Room, and Den Accent Lighting Packages
- Lawn Care and Snow Removal included in 55+ Active Adult Community
- On-Site 18-Hole Golf Course

# 2430 SONOMA LANE # 92

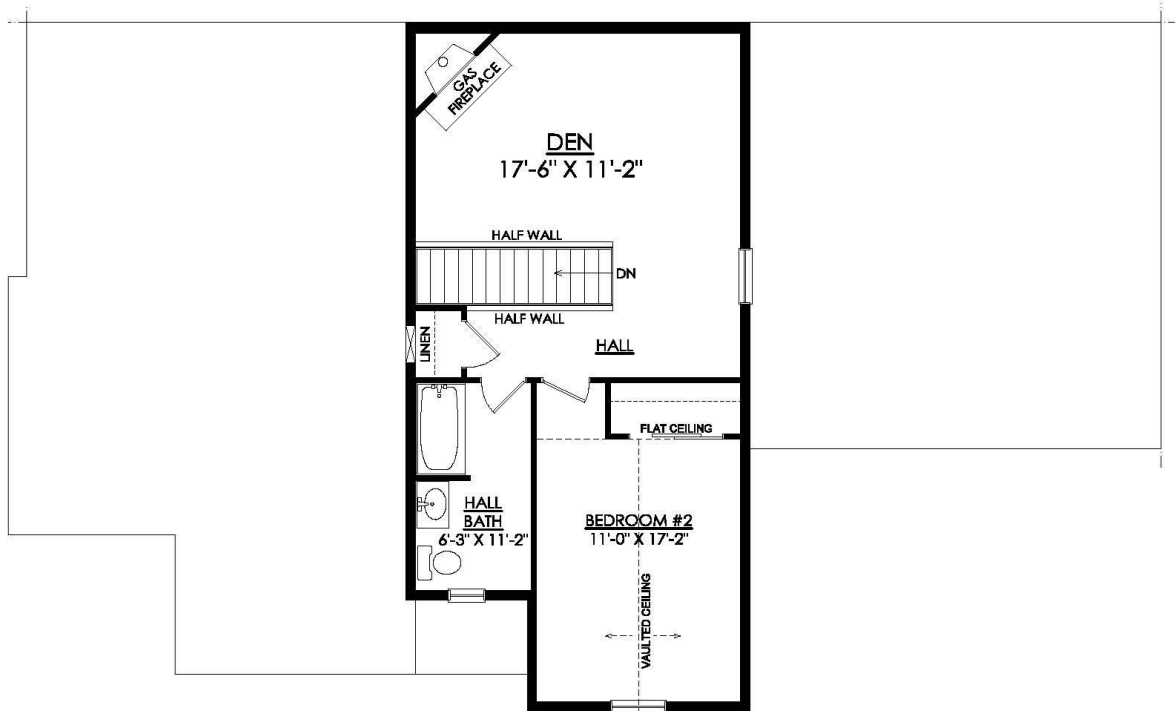
Easton, PA 18040



## TALIA QUAD 1ST FLOOR PLAN RIVERVIEW ESTATES 1966 SF

# 2430 SONOMA LANE # 92

Easton, PA 18040



**TALIA QUAD**  
**2ND FLOOR PLAN**  
**RIVERVIEW ESTATES**  
**1966 SF**