






2438 Sonoma Lane #93

Easton, PA 18040

HOME DETAILS

-  2 Beds
-  2.5 Baths
-  1,966 Sq Ft
-  2 Story
-  2 Car Garage



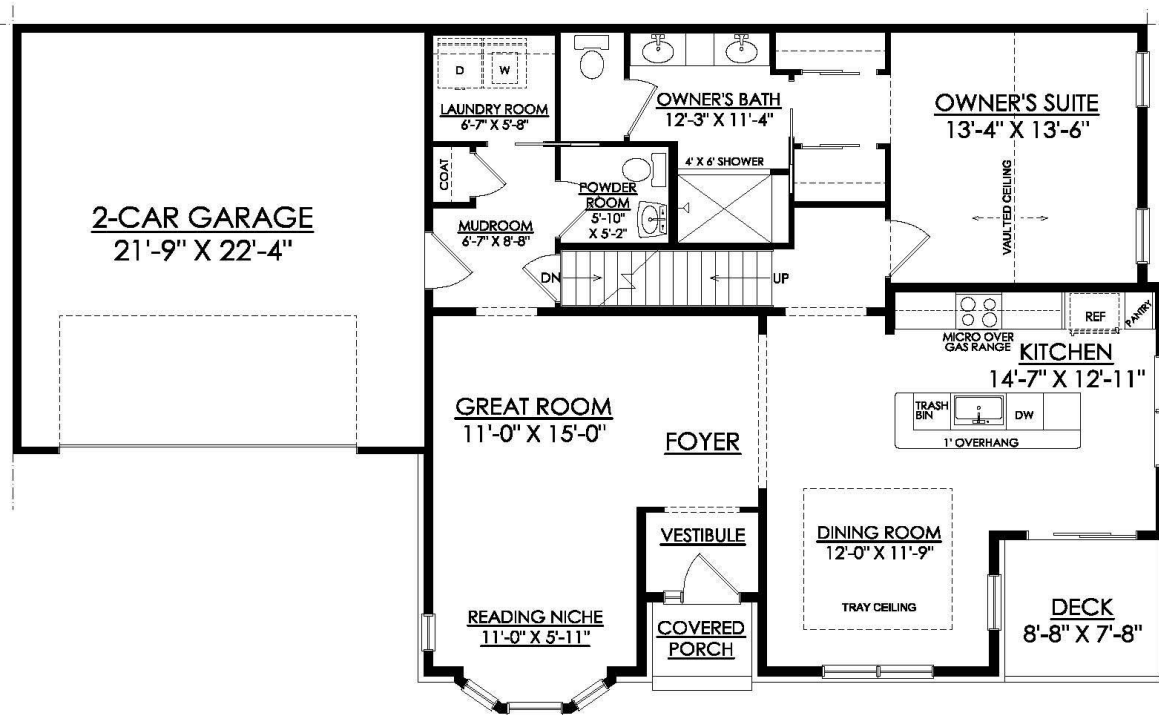
Welcome to the Talia, an elegant 55+ Active Adult home, thoughtfully designed to offer a luxurious lifestyle. Entering through the covered Porch you will find a vestibule that leads to a foyer. Just past the Foyer you will find the heart of the home, a spacious Great Room, which seamlessly flows into a connected Reading Niche illuminated by a wall of windows, providing a cozy retreat bat... Read More at tuskeshomes.com

HOME FEATURES

- 2 Bedrooms
- 2.5 Baths
- 2-Car Garage
- 1st Floor Owner's Suite with Vaulted Ceilings, 2 Closets, and Private Bath with 4' x 6' Tile Shower
- 1st Floor Laundry and Mudroom
- Silestone Quartz Countertops Throughout Home
- Dining Room with Tray Ceiling
- Upgraded Lighting and Trim Packages
- 2nd Floor Den Area
- Trex Deck off of Kitchen
- Lawn Care and Snow Removal included in 55+ Active Adult Community
- On-Site 18-Hole Golf Course

2438 SONOMA LANE #93

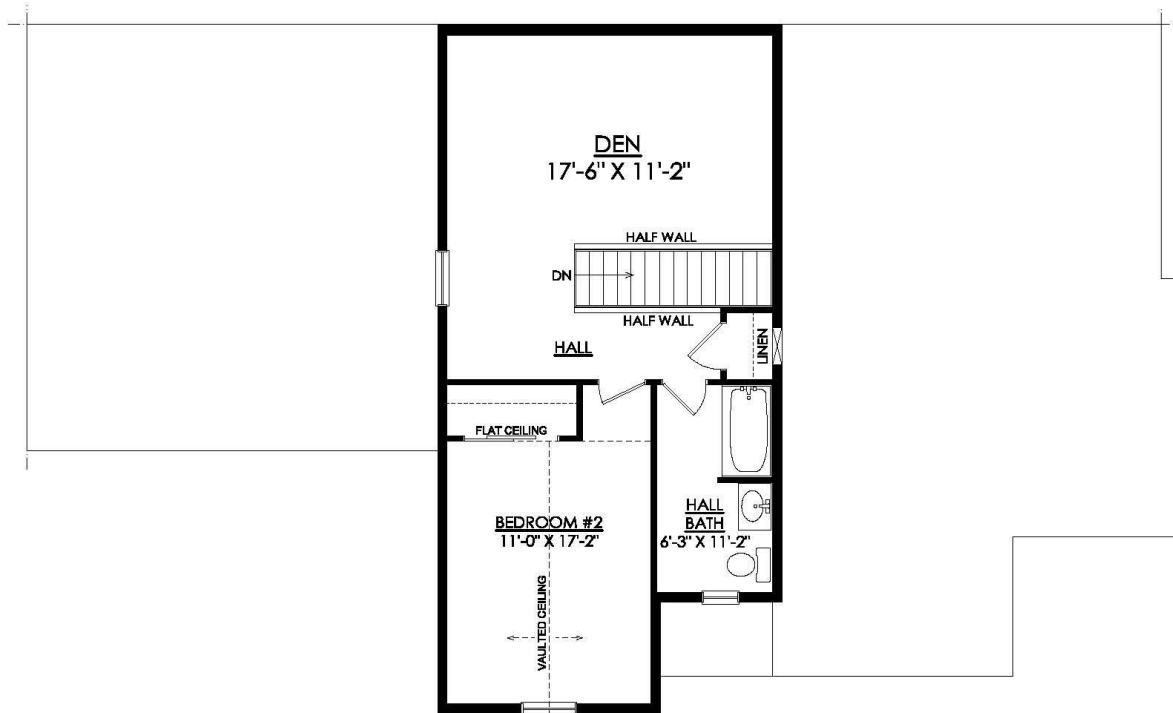
Easton, PA 18040



TALIA QUAD
1ST FLOOR PLAN
RIVERVIEW ESTATES
1966 SF

2438 SONOMA LANE #93

Easton, PA 18040



TALIA QUAD
2ND FLOOR PLAN
RIVERVIEW ESTATES
1966 SF