

4929 Farrcroft Drive #83B

Easton, PA 18040

HOME DETAILS

 4 Beds  3.5 Baths  2,797 Sq Ft

 3 Story  2 Car Garage



Whitehall Craftsman - Side Entry

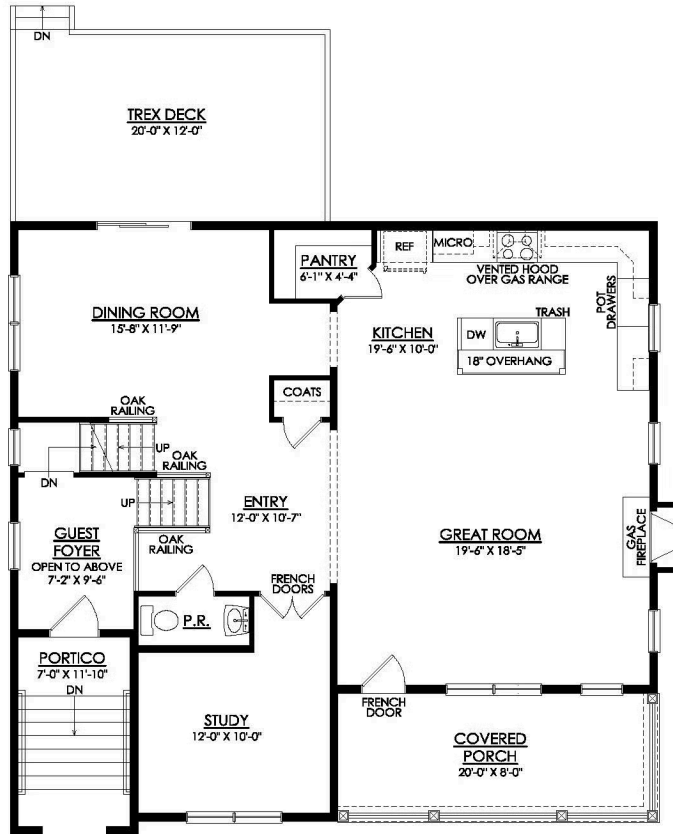
Additional Details About This Quick Delivery Home Coming Soon! Step into luxury with The Whitehall, an impressively designed home featuring a stylish and unique floorplan. As you enter through the convenient 2-Car Garage, you'll be greeted by the Family Foyer, a perfect space to keep your coats, shoes, and any other items out of sight. For extra comfort, this home includes a specially Fini... Read More at tuskeshomes.com

HOME FEATURES

- 4 Bedrooms
- 3.5 Bathrooms
- 2-Car Garage
- Finished Basement with Full Bath
- Owner's Suite with Spacious Walk-in Closet and Private Bath
- Open-Concept Great Room and Kitchen
- Gas Fireplace
- Stainless Steel GE Appliances in Kitchen
- Private Study

4929 FARRCROFT DRIVE #83B

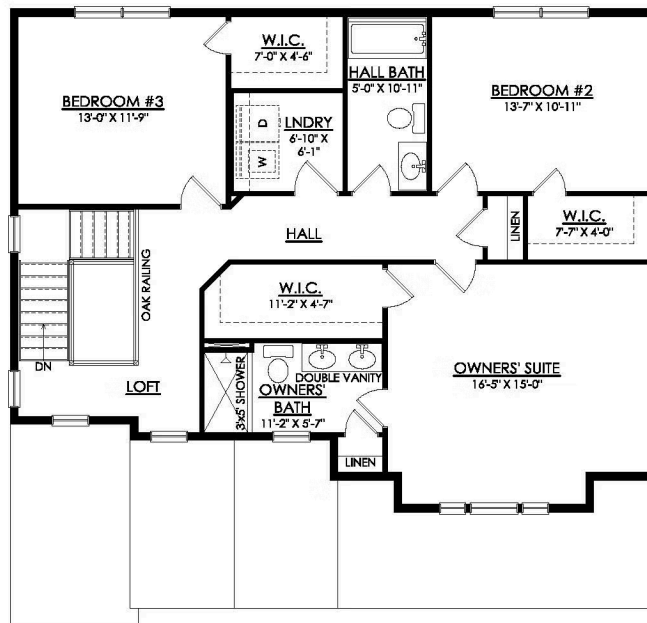
Easton, PA 18040



WHITEHALL CRAFTSMAN
1ST FLOOR PLAN
SC83B

4929 FARRCROFT DRIVE #83B

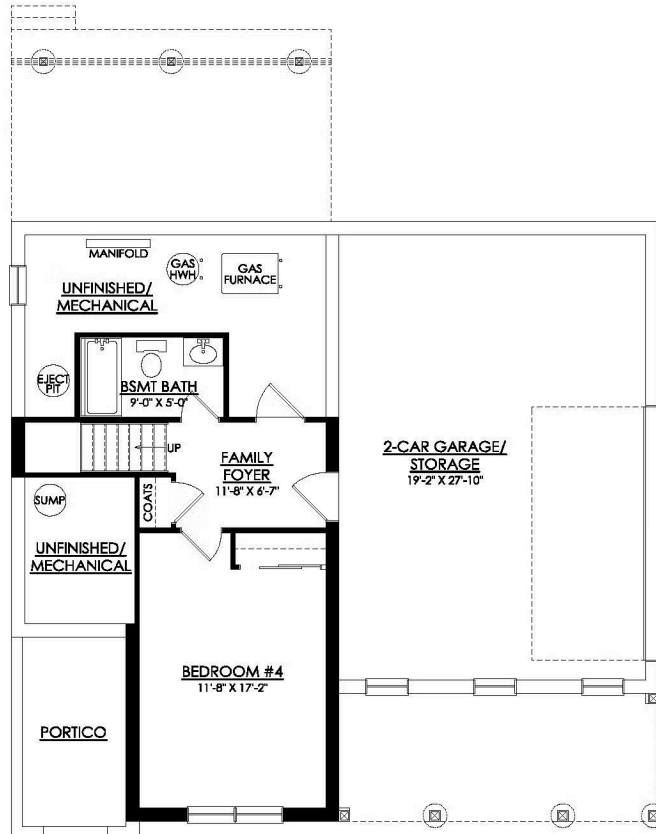
Easton, PA 18040



WHITEHALL CRAFTSMAN
2ND FLOOR PLAN
SC83B

4929 FARRCROFT DRIVE #83B

Easton, PA 18040



WHITEHALL CRAFTSMAN BASEMENT PLAN SC83B