

Breckenridge Grande Floor Plan

In The Estates at Steeplechase North from \$769,900

PLAN DETAILS

Pricing from \$769,900

- 4 Beds
 3.5 Baths
 3,113 Sq Ft
- 2 Story
 2 Car Garage



Farmhouse Elevation - Side Entry Garage

Experience luxury living the Breckenridge Grande, offering over 3000 sq ft of living space. Entertain in the stunning 2-story Great Room or relax in the nearby Living Room. The enormous kitchen features ample counter space and storage, with several configuration options to fit your lifestyle. The Dining Room is perfect for formal dinners while the Study offers a quiet place to work from home. The spacious Owner's Suite is located on the second floor and includes it's own Sitting Area and full Bathroom for ultimate privacy. An additional bedroom with an ensuite Bath is perfect for a guest suite or anyone in your family that needs a little more privacy. 2 more spacious bedrooms share a hall Bath, with a convenient 2nd floor Laundry Room nearby. Some images, videos, virtual tours shown ma ... Read More at tuskeshomes.com

Breckenridge Grande Floor Plan

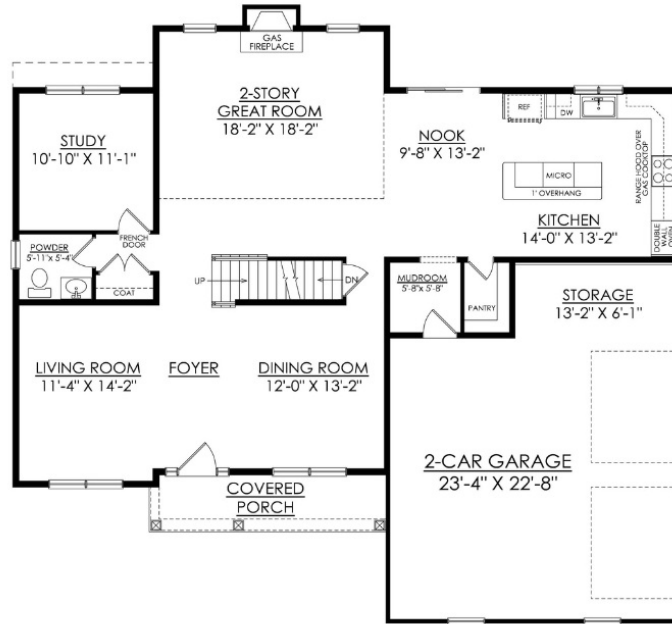
In The Estates at Steeplechase North from \$769,900



Traditional Elevation - Side Entry Garage

Breckenridge Grande Floor Plan

In The Estates at Steeplechase North from \$769,900



**BRECKENRIDGE GRANDE
FARMHOUSE**
STARTING AT 3126 SF

1ST FLOOR PLAN

Breckenridge Grande Floor Plan

In The Estates at Steeplechase North from \$769,900



**BRECKENRIDGE GRANDE
FARMHOUSE**
STARTING AT 3126 SF

2ND FLOOR PLAN

Breckenridge Grande Floor Plan

In The Estates at Steeplechase North from \$769,900



**BRECKENRIDGE GRANDE
TRADITIONAL**
STARTING AT 3117 SF

1ST FLOOR PLAN

Breckenridge Grande Floor Plan

In The Estates at Steeplechase North from \$769,900

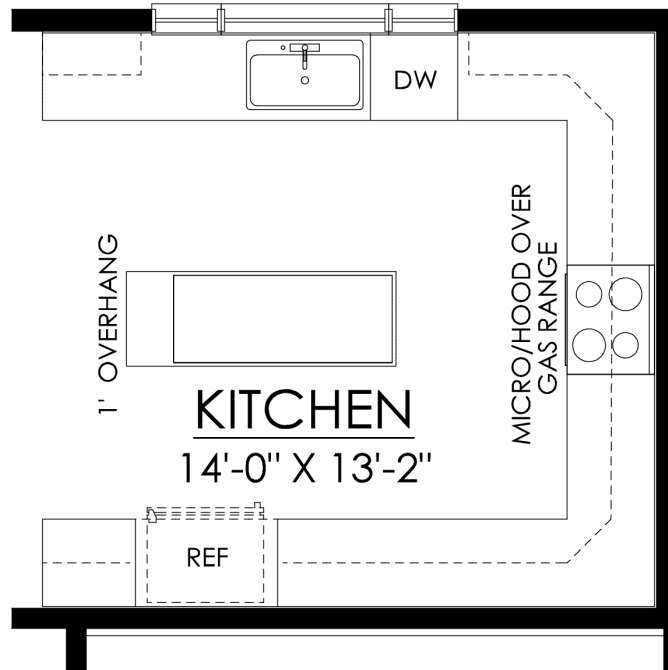


**BRECKENRIDGE GRANDE
TRADITIONAL**
STARTING AT 3117 SF

2ND FLOOR PLAN

Breckenridge Grande Floor Plan

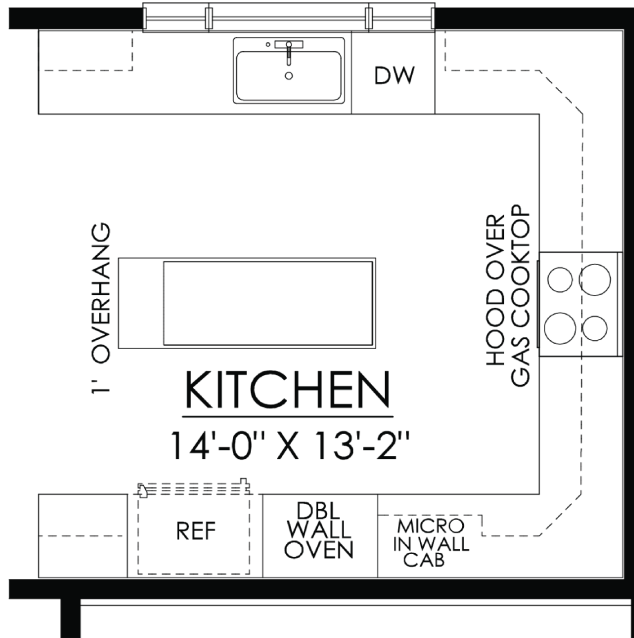
In The Estates at Steeplechase North from \$769,900



BRECKENRIDGE OPTION #60659- ALTERNATE KITCHEN LAYOUT

Breckenridge Grande Floor Plan

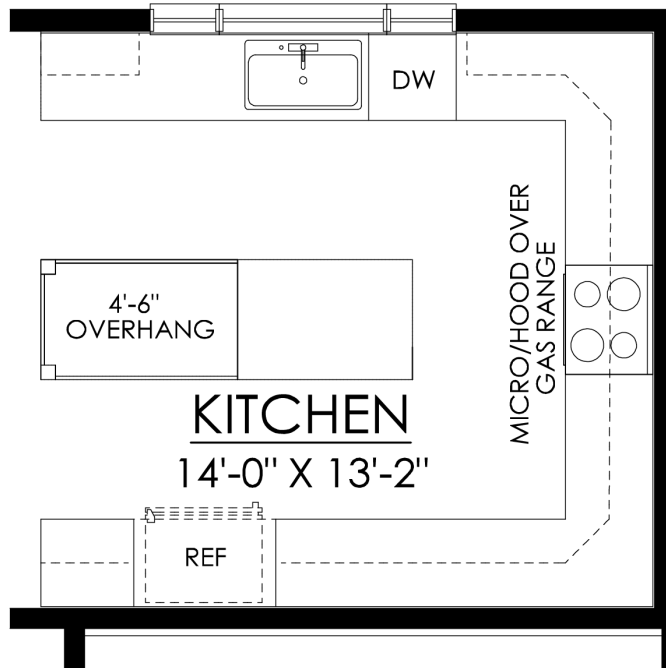
In The Estates at Steeplechase North from \$769,900



BRECKENRIDGE OPTION #60659- ALTERNATE KITCHEN WITH DOUBLE WALL OVEN LAYOUT

Breckenridge Grande Floor Plan

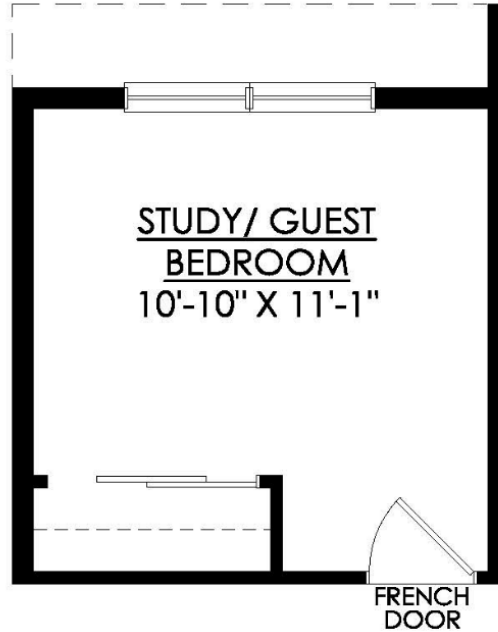
In The Estates at Steeplechase North from \$769,900



BRECKENRIDGE ALTERNATE KITCHEN WITH EXTENDED TABLETOP ISLAND

Breckenridge Grande Floor Plan

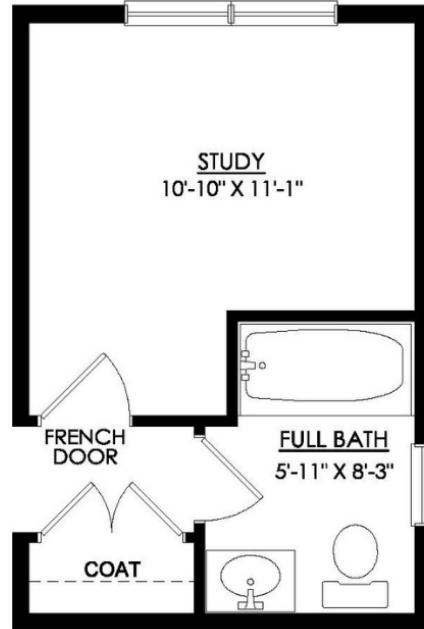
In The Estates at Steeplechase North from \$769,900



BRECKENRIDGE FIRST FLOOR BEDROOM OPTION #15000

Breckenridge Grande Floor Plan

In The Estates at Steeplechase North from \$769,900



BRECKENRIDGE
FIRST FLOOR FULL BATH
OPTION #30359