

Juniper Floor Plan

In The Estates at Steeplechase North from \$799,900

PLAN DETAILS
Pricing from \$799,900

-
-



Juniper Farmhouse- Side Entry Garage

Elevate your lifestyle with the Juniper, offering the perfect balance of privacy and comfort for you and your family. An impressive two-story Foyer sets the tone for this home's spacious open-concept main living area. The Kitchen is a cook's dream, with an expanded island, a walk-in pantry, and a butler's pantry for serving drinks or snacks. The airy 2-story Great Room boasts a gas fireplace and plenty of windows for natural light. A private Study and Powder Room complete the 1st floor layout. Head up the open staircase to find an enormous Owner's Suite with sitting area, a walk-in closets, and private Owner's Bath. Additionally, a Guest Suite with its own Bath, two additional Bedrooms that share a Jack-n-Jill bath, and a convenient 2nd floor laundry room can also be found on the 2nd ... Read More at tuskeshomes.com

Juniper Floor Plan

In The Estates at Steeplechase North from \$799,900



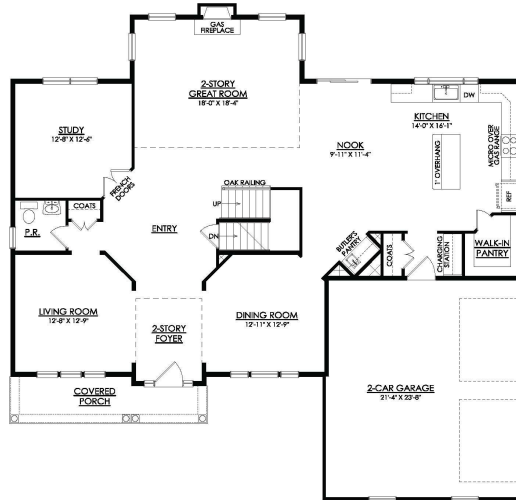
Juniper Traditional- Side Entry Garage



Traditional Elevation - Side Entry Garage

Juniper Floor Plan

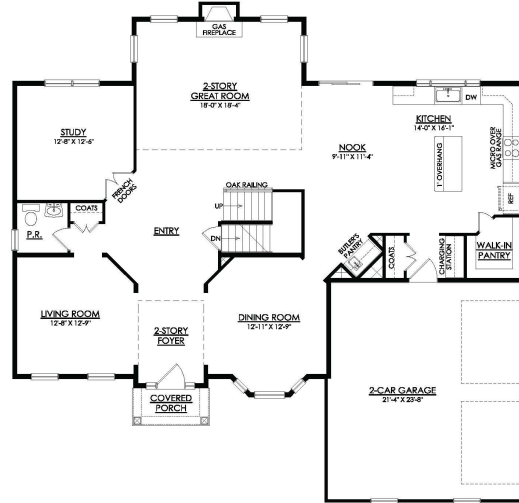
In The Estates at Steeplechase North from \$799,900



JUNIPER FARMHOUSE
1ST FLOOR PLAN

Juniper Floor Plan

In The Estates at Steeplechase North from \$799,900



JUNIPER TRADITIONAL
1ST FLOOR PLAN

Juniper Floor Plan

In The Estates at Steeplechase North from \$799,900



JUNIPER TRADITIONAL
2ND FLOOR PLAN