






# Madison Floor Plan

In The Estates at Steeplechase North from \$659,900

PLAN DETAILS  
Pricing from \$659,900

-  4 Beds
-  2.5 Baths
-  2,392 Sq Ft
-  2 Story
-  2 Car Garage



Traditional Side Entry Elevation

Welcome to the Madison, a charming and inviting home that's become one of our most popular floorplans. You'll feel right at home as soon as you step into its modern open-concept main living area. The seamless flow between the Dining Room, Kitchen with Nook, and Great Room creates a warm and welcoming atmosphere. The bright and sunny study with French doors and wall of windows is a perfect place to work or learn from home. The welcoming Foyer, convenient Powder Room, and practical Mudroom near the 2-car garage are just some of the lovely touches that make the Madison special. Upstairs, the Owner's Suite awaits with its spacious walk-in closet and private ensuite Bath. And with three additional Bedrooms, a full Bath, and a second-floor Laundry Room, there's plenty of space for everyone!Some ...  
Read More at [tuskeshomes.com](https://tuskeshomes.com)

# Madison Floor Plan

In The Estates at Steeplechase North from \$659,900



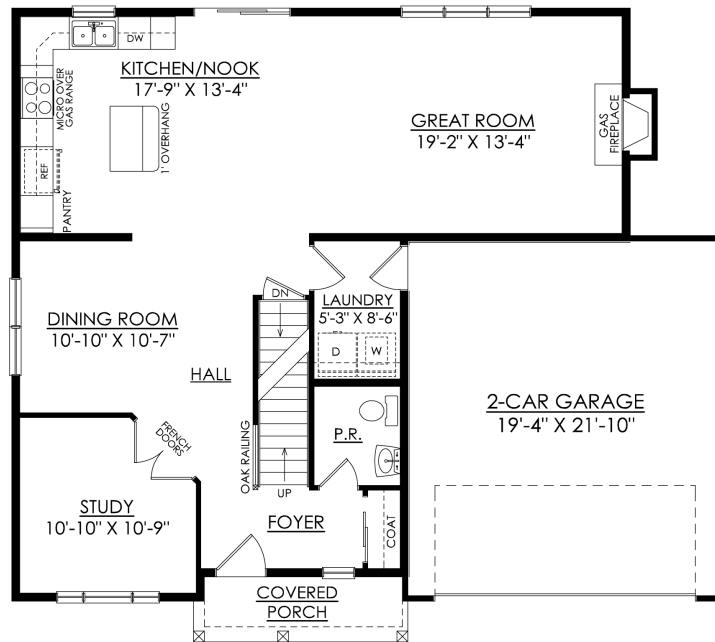
Country Side Entry Elevation



Traditional Elevation

# Madison Floor Plan

In The Estates at Steeplechase North from \$659,900

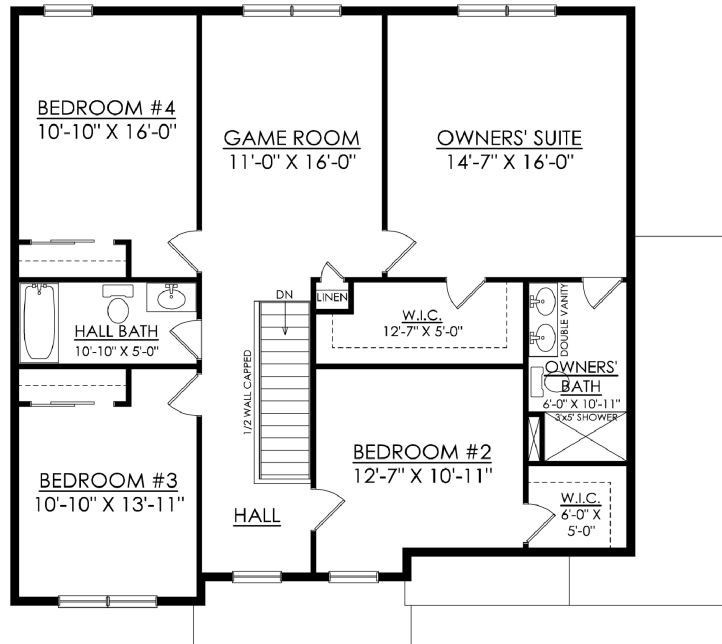


**MADISON TRADITIONAL**  
STARTING AT 2392 SF

1ST FLOOR PLAN

# Madison Floor Plan

In The Estates at Steeplechase North from \$659,900



MADISON TRADITIONAL  
STARTING AT 2392 SF

2ND FLOOR PLAN

# Madison Floor Plan

In The Estates at Steeplechase North from \$659,900

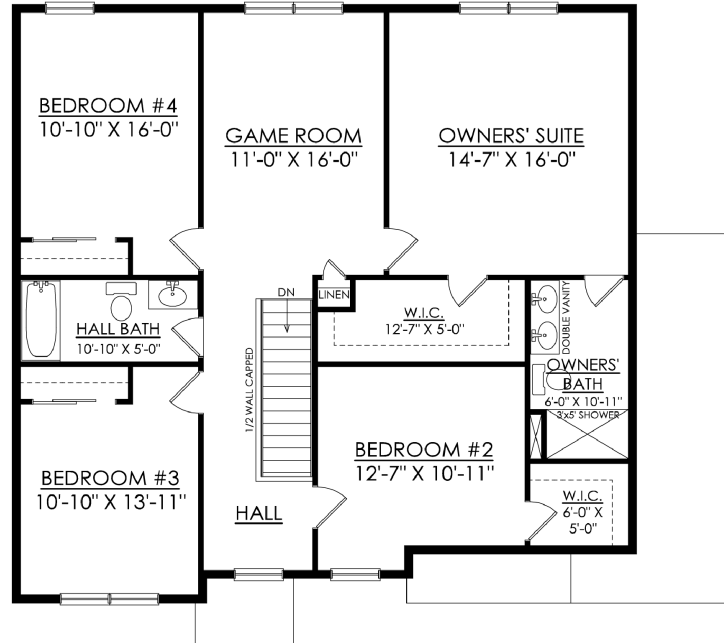


**MADISON COUNTRY**  
STARTING AT 2392 SF

**1ST FLOOR PLAN**

# Madison Floor Plan

In The Estates at Steeplechase North from \$659,900



MADISON COUNTRY  
STARTING AT 2392 SF

2ND FLOOR PLAN