

# Rockford Floor Plan

In The Estates at Steeplechase North from \$672,900

PLAN DETAILS

Pricing from \$672,900

- 3 Beds
  3.0 Baths
  2,124 Sq Ft
- 1 Story
  2 Car Garage



Rockford Cottage- Front-Entry

Introducing the Rockford, an inviting Ranch home designed for both comfort and style and offers a thoughtful layout that maximizes space and functionality. At the heart of the home, the open-concept design of the Great Room and Kitchen creates a welcoming atmosphere. With a grand cathedral ceiling and a wall of windows, there is a sense of openness so that no matter how many people visit, you will never feel cramped. The Owner's Suite tucked away in the back of the home includes two spacious Walk-In Closets, as well as its own ensuite bathroom for added privacy. The Rockford also features two additional Bedrooms that offer flexibility for guests, a home office, or other uses to suit your needs. With thoughtfully designed spaces and a layout that promotes flow and functionality, t ... Read More at [tuskeshomes.com](https://tuskeshomes.com)

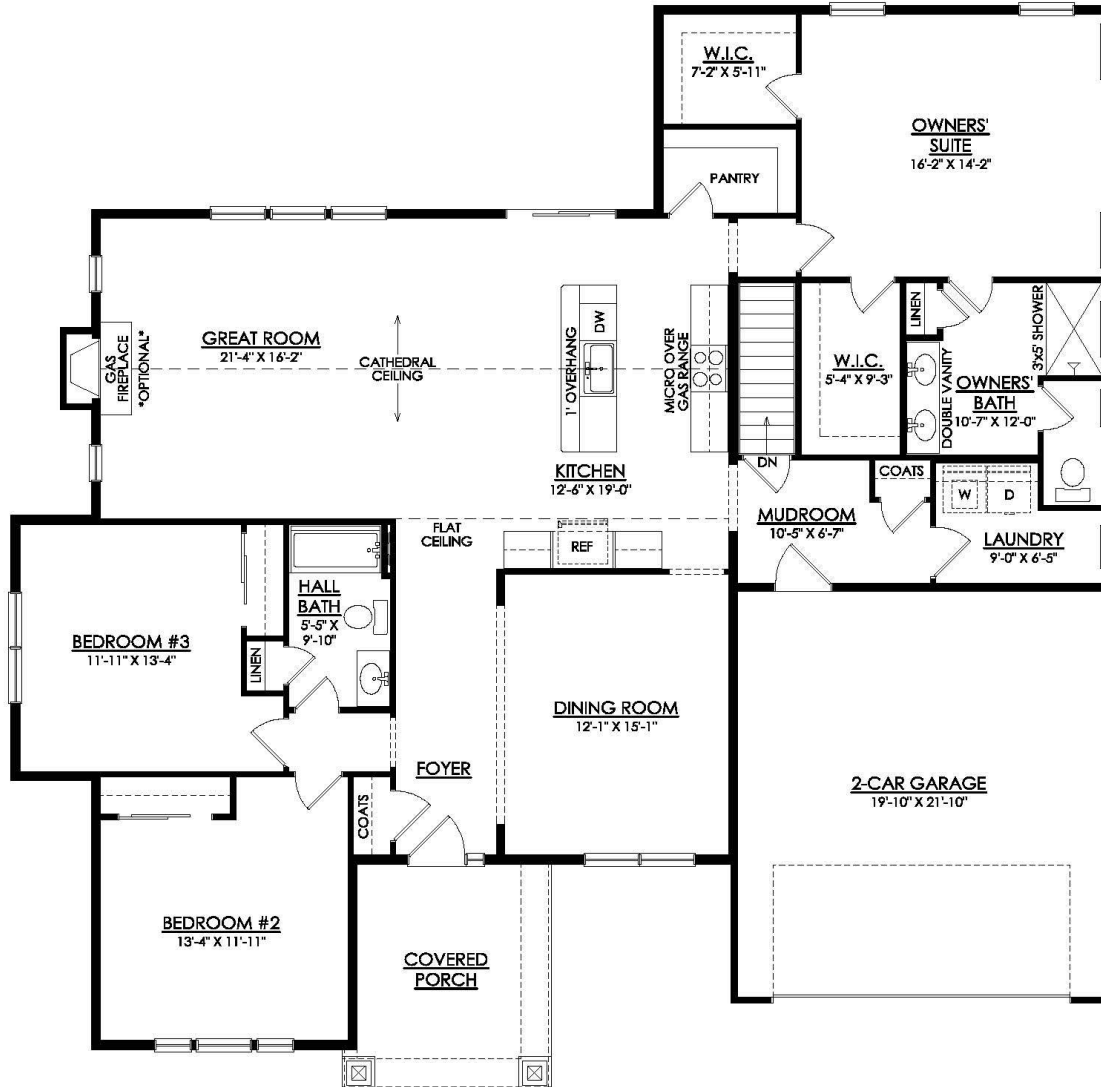
# Rockford Floor Plan

In The Estates at Steeplechase North from \$672,900



# Rockford Floor Plan

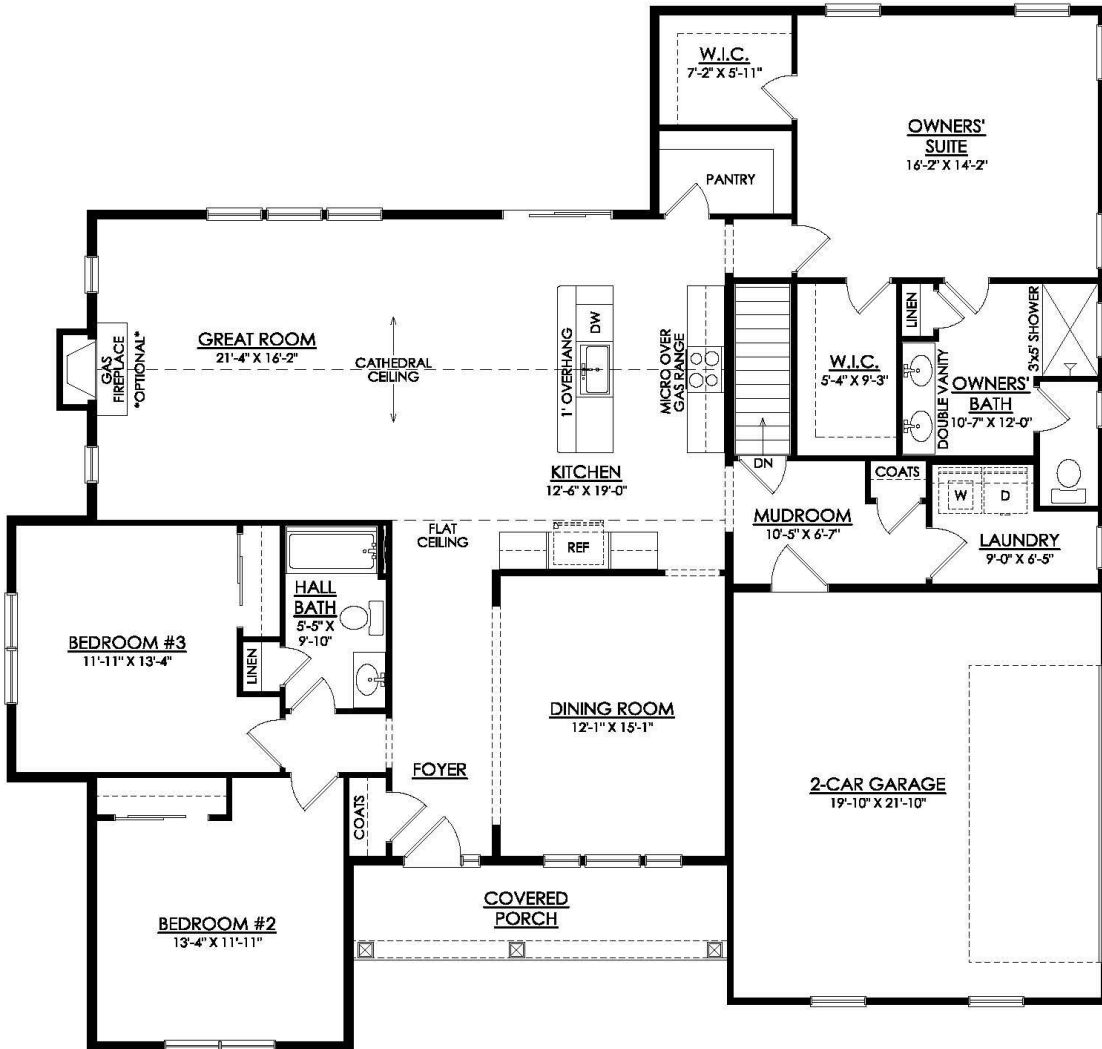
In The Estates at Steeplechase North from \$672,900



## ROCKFORD CRAFTSMAN 1ST FLOOR PLAN

# Rockford Floor Plan

In The Estates at Steeplechase North from \$672,900

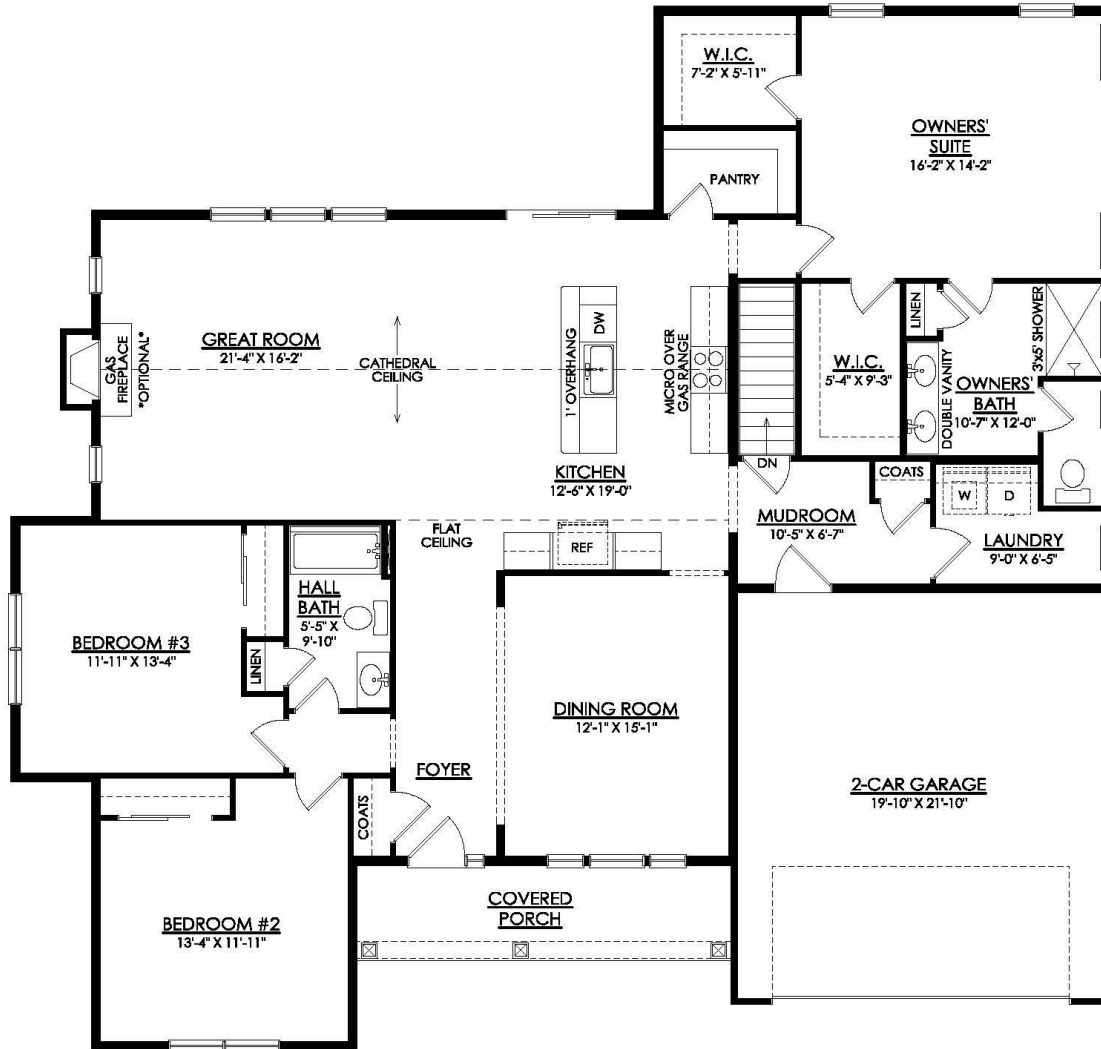


## ROCKFORD COTTAGE 1ST FLOOR PLAN



# Rockford Floor Plan

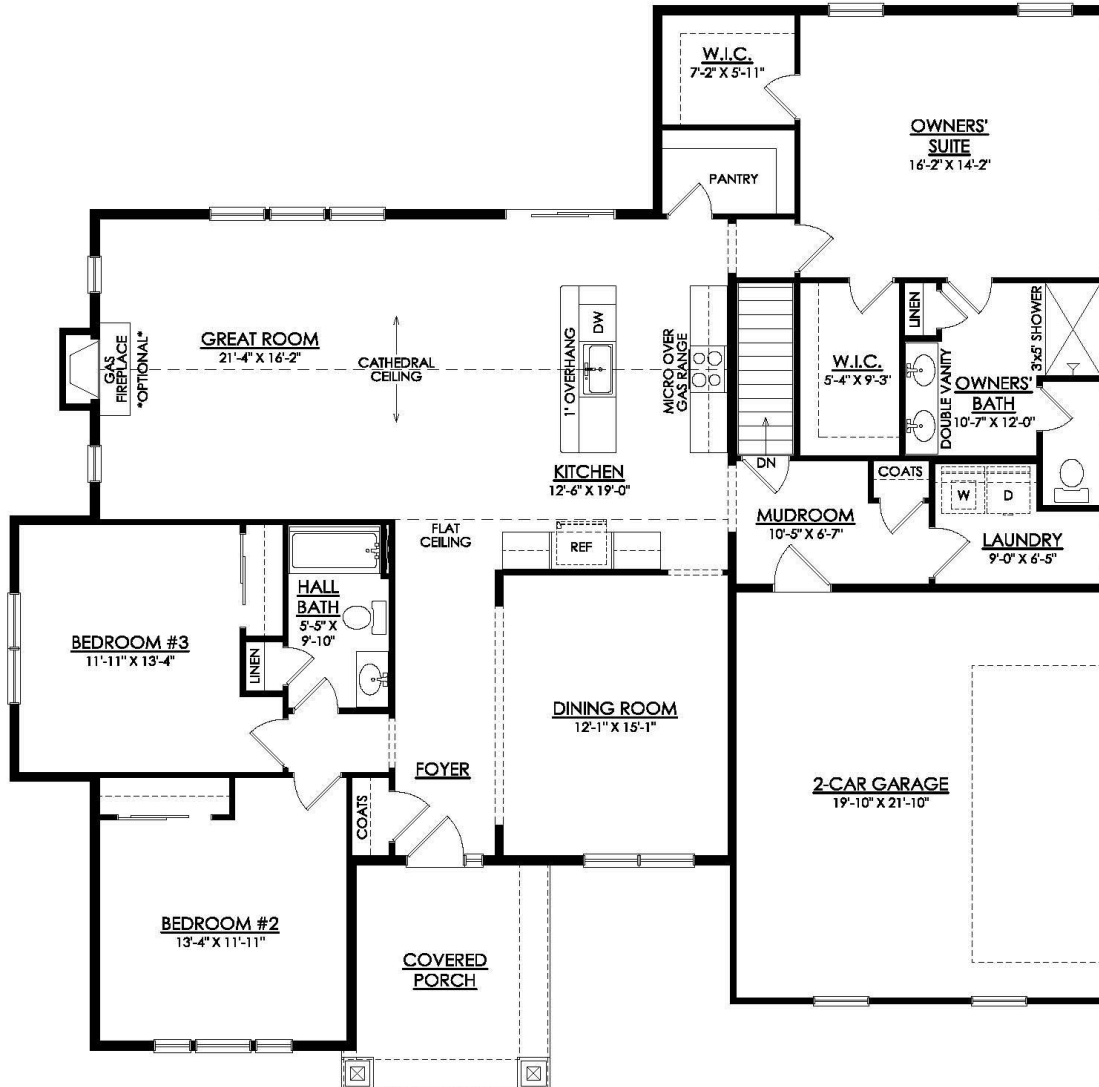
In The Estates at Steeplechase North from \$672,900



**ROCKFORD COTTAGE**  
1ST FLOOR PLAN

# Rockford Floor Plan

In The Estates at Steeplechase North from \$672,900



**ROCKFORD CRAFTSMAN  
1ST FLOOR PLAN**