

Vinecrest Floor Plan

In The Estates at Steeplechase North from **\$729,900**

PLAN DETAILS

Pricing from **\$729,900**

4 Beds 2.5 Baths 2,700 Sq Ft

2 Story 2 Car Garage



Cottage Elevation

The Vinecrest floor plan features an open-concept layout, ideal for entertaining family and friends. The Kitchen includes an island with an overhang and a convenient walk-in pantry for your organizational needs. Connected to the kitchen is the Dining Room, as well as the spacious Great Room, which features a gas fireplace for cozy nights at home. The entire first floor is flooded with natural light from the walls of windows, creating a beautiful and inviting space to call home. Upon entering this home through the Foyer, you'll find a private Study through elegant double French doors, a coat closet, and a Powder Room. Just off the Two-Car Garage is the spacious Laundry Room with plenty of room for organizing cleaning supplies or anything you'd prefer to keep out of sight. This plan's Owner's ...
Read More at tuskeshomes.com

Vinecrest Floor Plan

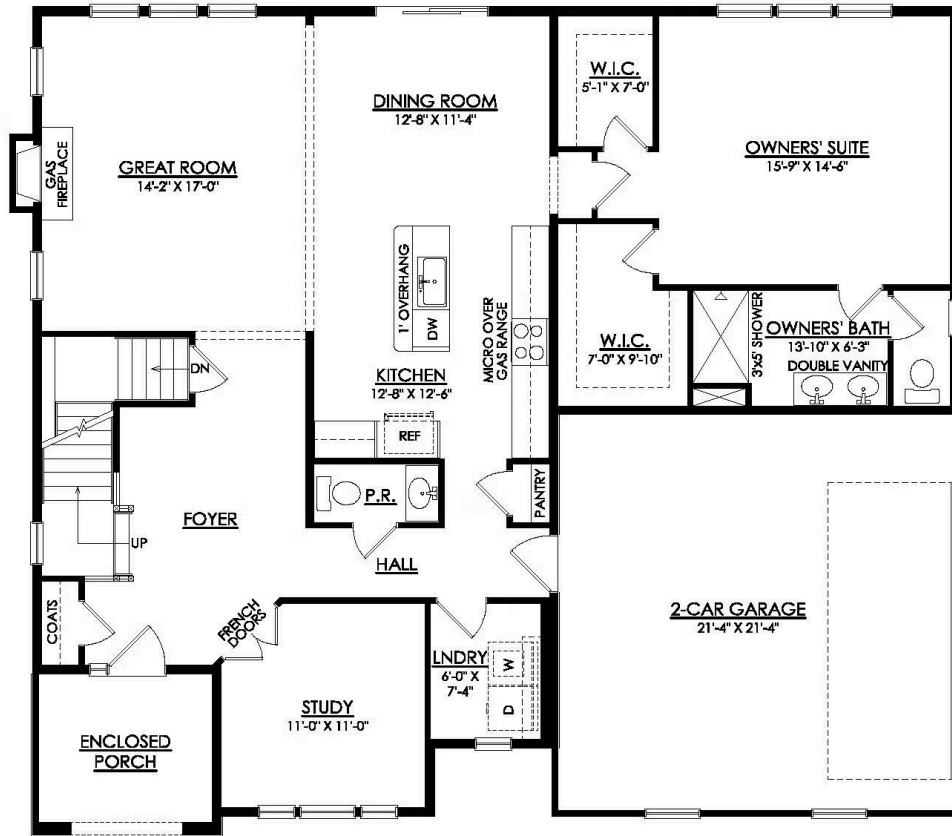
In The Estates at Steeplechase North from \$729,900



Traditional Elevation

Vinecrest Floor Plan

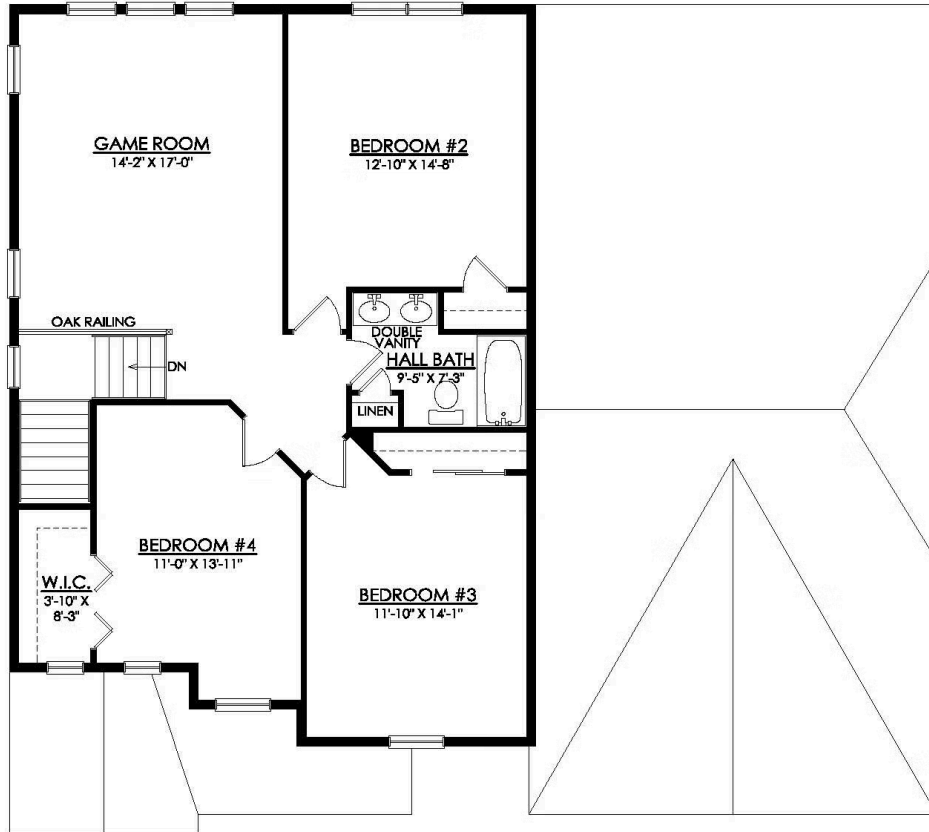
In The Estates at Steeplechase North from \$729,900



VINECREST COTTAGE 1ST FLOOR PLAN

Vinecrest Floor Plan

In The Estates at Steeplechase North from \$729,900



VINECREST COTTAGE 2ND FLOOR PLAN



Vinecrest Floor Plan

In The Estates at Steeplechase North from **\$729,900**



Vinecrest Floor Plan

In The Estates at Steeplechase North from **\$729,900**