

Whitehall Floor Plan

In The Estates at Steeplechase North from **\$726,900**

PLAN DETAILS

Pricing from **\$726,900**

3 Beds 2.5 Baths 2,546 Sq Ft

3 Story 2 Car Garage



Whitehall Craftsman - Side Entry

Step into luxury with The Whitehall, an impressively designed home featuring a stylish and unique floorplan. As you enter through the convenient 2-Car Garage, you'll be greeted by the Family Foyer, a perfect space to keep your coats, shoes, and any other items out of sight. Take the stairs to the second floor and be awed by the spacious Entry, Guest Foyer, and Great Room with stunning views of the covered front porch. The Great Room seamlessly flows into the chic Kitchen, equipped with stainless steel appliances, granite or quartz countertops, a corner pantry, and a large kitchen island with an undermount sink and an overhang for seating. Entertain in style with a grand Dining Room or work from home in the private Study. A conveniently located Powder Room can also be found in the main livin ... Read More at tuskeshomes.com

PLAN FEATURES

- 3 Bedrooms
- 2.5 Bathrooms
- 2-Car Garage
- Starting at 2546 Square Feet
- Open-Concept Great Room and Kitchen
- Gas Fireplace in Great Room
- Stainless Steel GE Kitchen Appliances
- Quartz or Granite Countertops

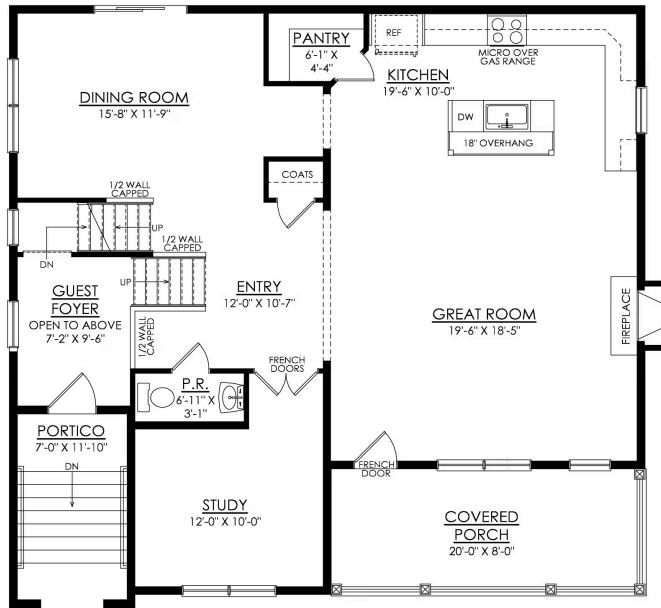
Whitehall Floor Plan

In The Estates at Steeplechase North from \$726,900



Whitehall Floor Plan

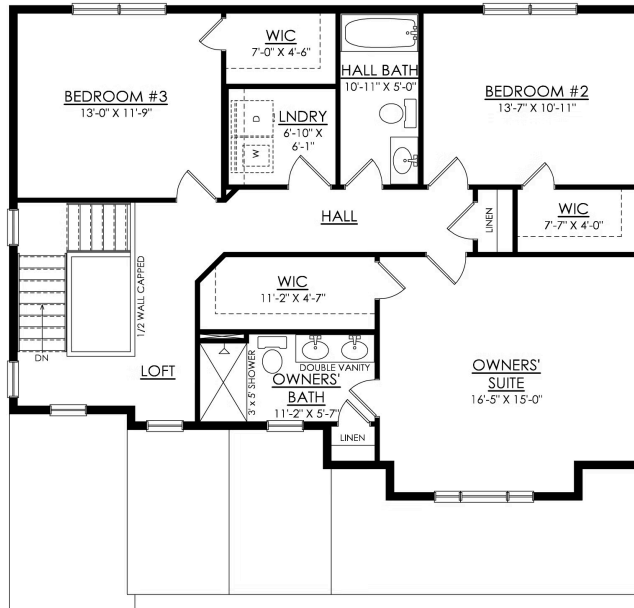
In The Estates at Steeplechase North from \$726,900



WHITEHALL CRAFTSMAN
STARTING AT 2546 SF
1ST FLOOR PLAN

Whitehall Floor Plan

In The Estates at Steeplechase North from \$726,900



WHITEHALL CRAFTSMAN
STARTING AT 2546 SF
2ND FLOOR PLAN



Whitehall Floor Plan

In The Estates at Steeplechase North from **\$726,900**



Whitehall Floor Plan

In The Estates at Steeplechase North from **\$726,900**



Whitehall Floor Plan

In The Estates at Steeplechase North from **\$726,900**



Whitehall Floor Plan

In The Estates at Steeplechase North from **\$726,900**



Whitehall Floor Plan

In The Estates at Steeplechase North from **\$726,900**



Whitehall Floor Plan

In The Estates at Steeplechase North from **\$726,900**



Whitehall Floor Plan

In The Estates at Steeplechase North from **\$726,900**



Whitehall Floor Plan

In The Estates at Steeplechase North from **\$726,900**



Whitehall Floor Plan

In The Estates at Steeplechase North from **\$726,900**



Whitehall Floor Plan

In The Estates at Steeplechase North from **\$726,900**