






79 Tumble Creek #15

Easton, PA 18042

HOME DETAILS

-  4 Beds
-  3.5 Baths
-  3,113 Sq Ft
-  2 Story
-  2 Car Garage



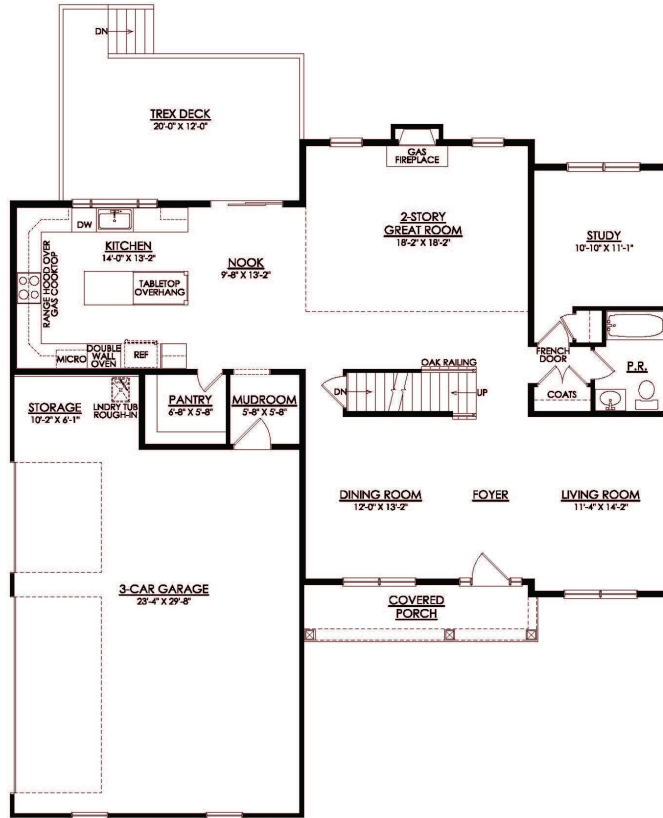
Experience luxury living the Breckenridge Grande, offering over 3000 sq ft of living space. Entertain in the stunning 2-story Great Room or relax in the nearby Living Room. The enormous kitchen features ample counter space and storage, with several configuration options to fit your lifestyle. The Dining Room is perfect for formal dinners while the Study offers a quiet place to work from ... Read More at tuskeshomes.com

HOME FEATURES

- 4 Bedrooms
- 4 Baths
- 3-Car Side-Entry Garage with Storage Space
- 2-Story Great Room with Gas Fireplace
- Full Bath on 1st Floor
- Expanded Study with Additional Closet for Guest Room
- Spacious Owner's Suite with Large Walk-In Closet, Private Bath, and Sitting Area
- 9' Walk-Up Basement with 5' Double French Doors and Wooded Views
- 12' x 20' Trex Deck with White Vinyl Railing and Steps to Grade

79 TUMBLE CREEK #15

Easton, PA 18042



**BRECKENRIDGE GRANDE
FARMHOUSE**
1ST FLOOR PLAN
TC15

79 TUMBLE CREEK #15

Easton, PA 18042



**BRECKENRIDGE GRANDE
FARMHOUSE**
2ND FLOOR PLAN
TC15