

# Meridian Floor Plan

In Tumble Creek Estates from \$779,900

PLAN DETAILS  
Pricing from \$779,900

4 Beds   
 2.5 Baths   
 2,820 Sq Ft  
 2 Story   
 2 Car Garage



Craftsman Elevation – Side Entry Garage

Step into opulence with The Meridian, a stunning floorplan starting at 2820 sq ft. The Kitchen boasts a large island with seating, granite or quartz countertops, and a dining Nook surrounded by windows. The main level also includes a spacious Great Room, formal Dining Room, Private Study with French doors, Powder Room, Mudroom, and welcoming Foyer. Upstairs, the Owner's Suite features double doors and 2 walk-in closets with an attached Owner's Bath. 3 additional bedrooms, a shared hall bath, and a 2nd floor Laundry Room complete the layout. For even more space, consider the optional Bonus Room above the Garage, perfect for a 5th Bedroom, second Home Office, or Play Room. Some images, videos, virtual tours shown may be from a previously built Tuskes home of similar design. Actual option ... Read More at [tuskeshomes.com](http://tuskeshomes.com)

## PLAN FEATURES

- 4 Bedrooms
- 2.5 Bathrooms
- 2-Car Garage with Additional Storage
- Starting at 2820 Square Feet
- Granite or Quartz Kitchen Countertops
- Stainless Steel Range/Oven, Microwave, and Dishwasher
- Dining Nook
- 2nd Floor Laundry Room
- Mudroom
- Private Owner's Suite

# Meridian Floor Plan

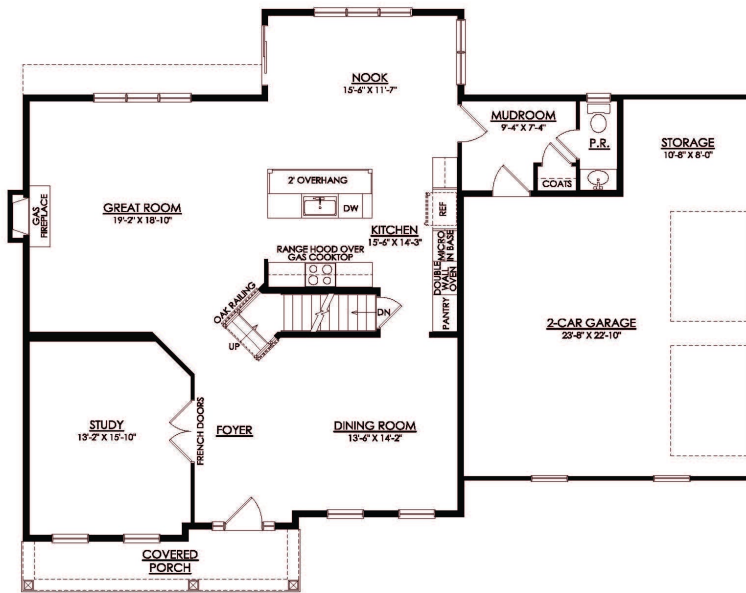
In Tumble Creek Estates from \$779,900



Farmhouse Elevation - Side Entry Garage

# Meridian Floor Plan

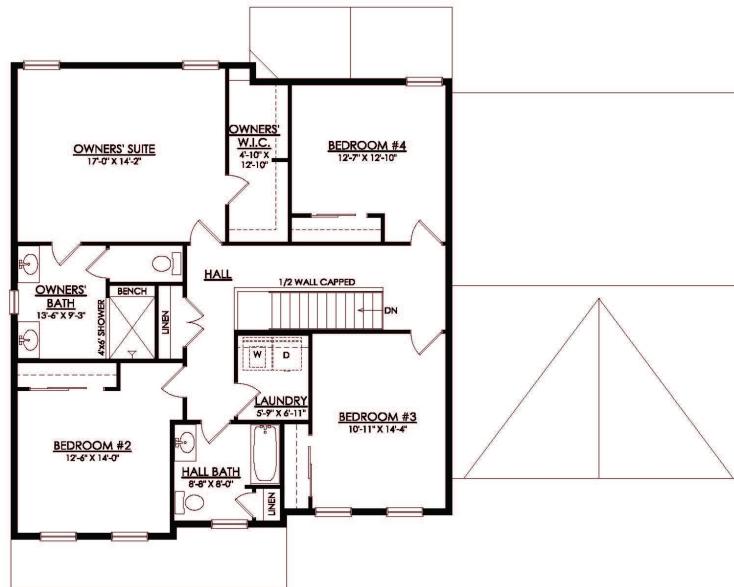
In Tumble Creek Estates from \$779,900



**MERIDIAN CRAFTSMAN**  
1ST FLOOR PLAN

# Meridian Floor Plan

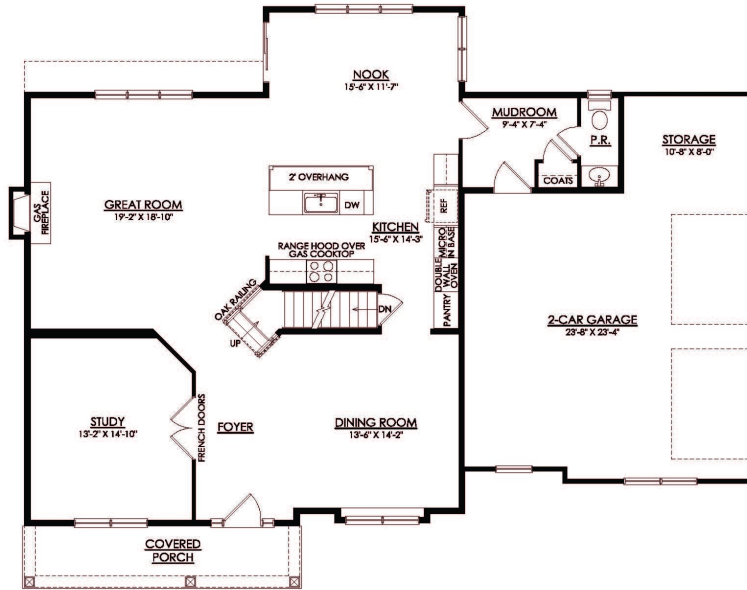
In Tumble Creek Estates from \$779,900



**MERIDIAN CRAFTSMAN**  
2ND FLOOR PLAN

# Meridian Floor Plan

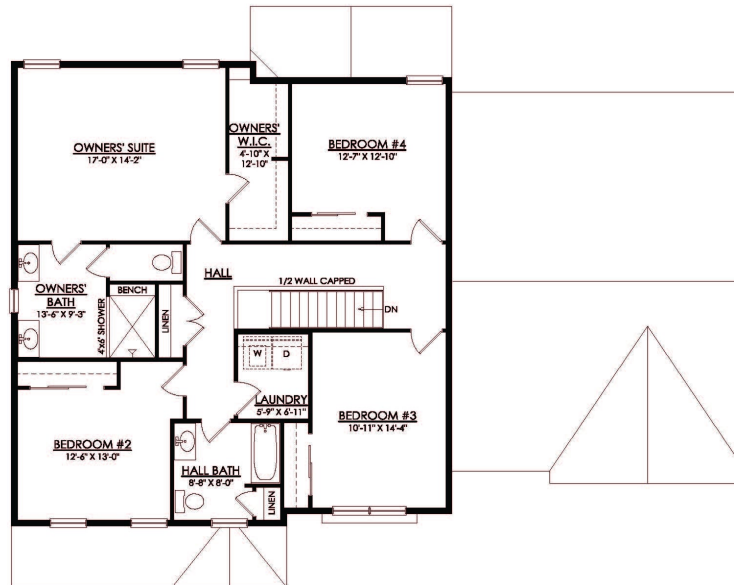
In Tumble Creek Estates from \$779,900



**MERIDIAN FARMHOUSE**  
1ST FLOOR PLAN

# Meridian Floor Plan

In Tumble Creek Estates from \$779,900



**MERIDIAN FARMHOUSE**  
2ND FLOOR PLAN

# Meridian Floor Plan

In Tumble Creek Estates from \$779,900

