






# 95 Timber Trail #47

Easton, PA 18045

## HOME DETAILS

 3 Beds   
  2.5 Baths   
  2,033 Sq Ft  
 2 Story   
  2 Car Garage



Welcomed to the Grayson, a perfect home for those seeking ample living space, modern amenities, and comfortable living. With its open concept design and 2-story Great Room, this spacious floor plan will have you feeling right at home. The Kitchen is a chef's dream, with its ample counter space, island with seating, and a sliding glass door leading to the outdoors. Also found on the first... [Read More at tuskeshomes.com](http://tuskeshomes.com)

## HOME FEATURES

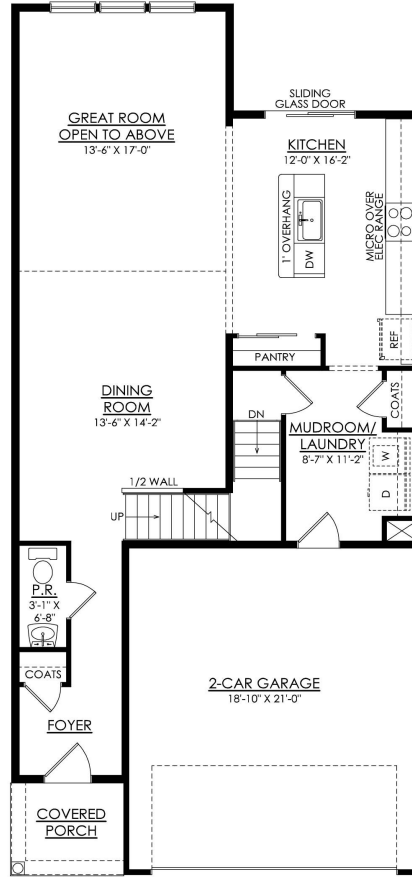
- 3 Bedrooms
- 2.5 Bathrooms
- 2-Car Garage
- 2033 Square Feet
- Covered Front Porch
- Open-Concept Main Living Area
- Kitchen Island with Overhang for Seating
- Pantry
- Rough-in Full Bathroom in Basement
- Modern Farmhouse Luxe Collection

# 95 TIMBER TRAIL #47

Easton, PA 18045



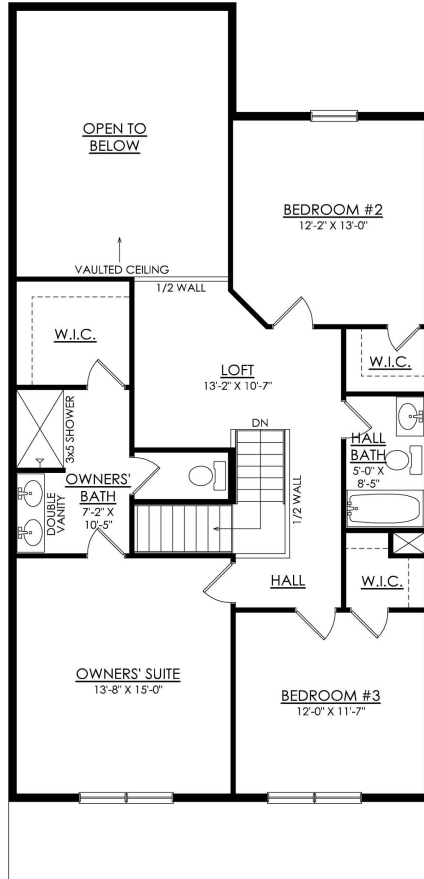
GRAYSON  
END UNIT



GRAYSON- 1ST FLOOR  
STARTING AT 2007 SF

# 95 TIMBER TRAIL #47

Easton, PA 18045



GRAYSON- 2ND FLOOR  
STARTING AT 2007 SF