

Shawnee Floor Plan

In Wolf's Run from \$544,985

PLAN DETAILS

Pricing from \$544,985

- 4 Beds 3.5 Baths 2,354 Sq Ft
- 2 Story 2 Car Garage



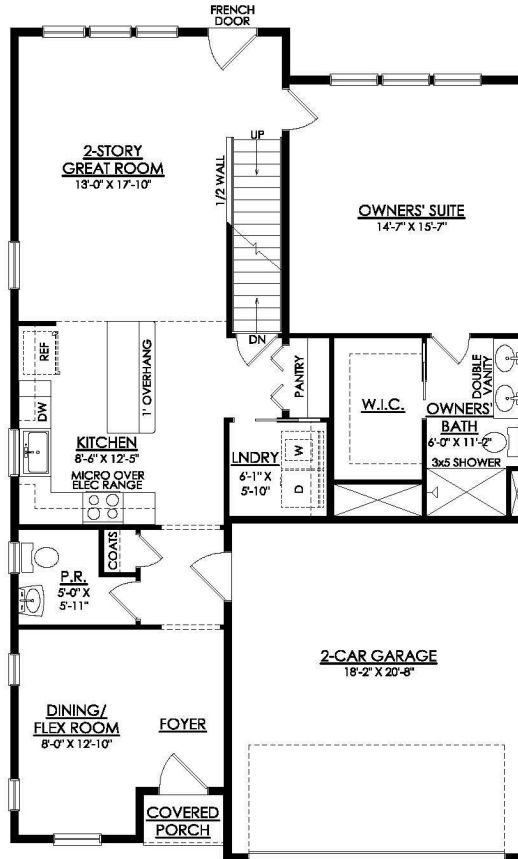
Our most spacious townhome plan, the Shawnee is perfect for multi-generational families or those looking for more room for everyday living. As you step through the welcoming covered front porch, you are greeted by a Flex Room that could provide a formal dining area or a quiet place to work from home. A coat closet, Powder Room, and access to a convenient 2-car Garage complete the entry experience. Head into the adjoining Kitchen which features an island with an overhang, granite or quartz countertops, and a pantry. The open and airy 2-story Great Room is the perfect place to unwind or entertain, with a wall of windows and a French door leading to the backyard. This home's 1st-floor Owner's Suite includes a private Bath with a 3' x 5' shower and a walk-in closet with sh ... Read More at tuskeshomes.com

PLAN FEATURES

- 4 Bedrooms
- 3.5 Bathrooms
- 2-Car Garage
- Starting at 2354 Square Feet
- Kitchen Island with Overhang for Seating
- Pantry
- 2-Story Great Room
- 1st Floor Owner's Suite with Private Bathroom
- 1st Floor Laundry Room
- Bedroom with Private Bath on 2nd Floor
- Optional 5th Bedroom

Shawnee Floor Plan

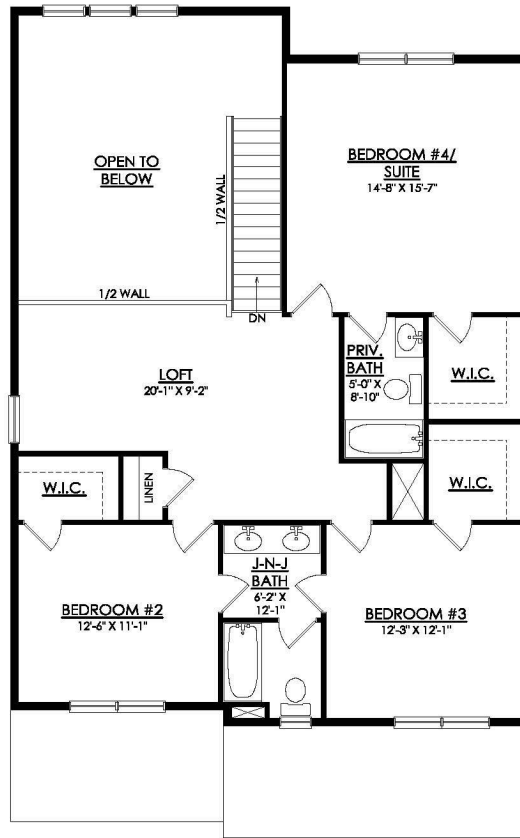
In Wolf's Run from \$544,985



SHAWNEE- 1ST FLOOR
STARTING AT 2354 SF

Shawnee Floor Plan

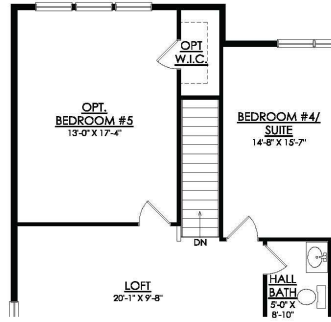
In Wolf's Run from \$544,985



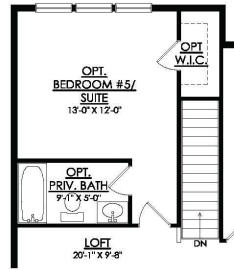
SHAWNEE- 2ND FLOOR
STARTING AT 2354 SF

Shawnee Floor Plan

In Wolf's Run from \$544,985



SHAWNEE- OPT.
5TH BEDROOM
ADDS 273 SF



SHAWNEE- OPT.
5TH BEDROOM/SUITE
ADDS 273 SF