

# Mia Floor Plan

In Hillcrest Estates at Mountain Top from **\$400,900**

## PLAN DETAILS

Pricing from **\$400,900**

3 Beds 2.5 Baths 1,928 Sq Ft

2 Story 2 Car Garage



Mia Rendering

Welcome to the Mia, a beautifully designed and thoughtfully crafted home that's perfect for families looking for comfort and convenience. Entering through the foyer, you're greeted by a warm and inviting open-concept Great Room, Kitchen, and Dining Nook. The spacious Kitchen comes equipped with modern appliances, ample countertop space, and a perfect view of the main hub of the home, making entertaining a breeze. A well-located Powder Room and Mudroom with a Walk-in Pantry just off the 2-Car Garage complete the Mia's first floor. Upstairs, you'll find a large Owner's Suite with two walk-in closets and a private Owner's Bath, making it the perfect retreat after a long day. Additionally, there are two more Bedrooms with walk-in closets that share a Hall Bath, providing plenty of space for a g ... Read More at [tuskeshomes.com](https://tuskeshomes.com)

# Mia Floor Plan

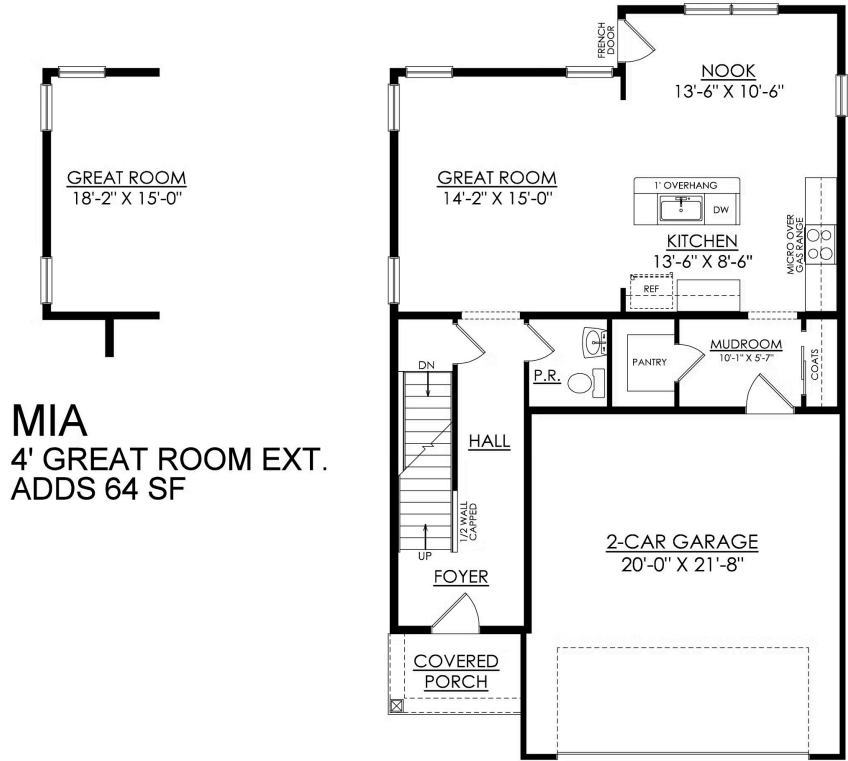
In Hillcrest Estates at Mountain Top from \$400,900



MIA 1ST FLOOR PLAN  
STARTING AT 1928 SF

# Mia Floor Plan

In Hillcrest Estates at Mountain Top from \$400,900

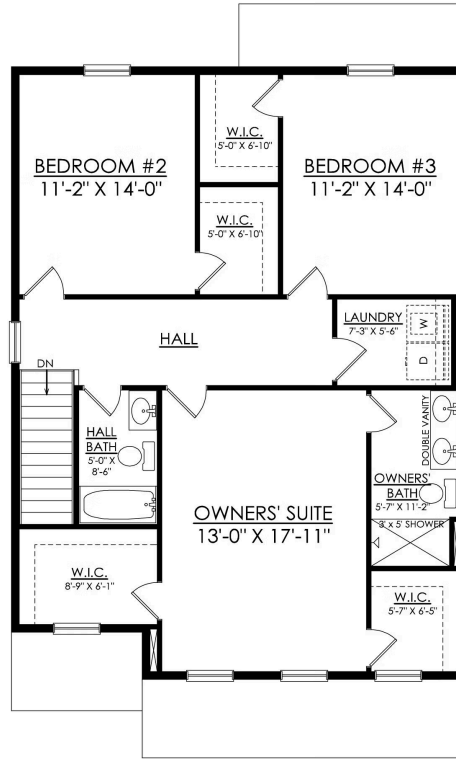


**MIA**  
4' GREAT ROOM EXT.  
ADDS 64 SF

**MIA** 1ST FLOOR PLAN  
STARTING AT 1928 SF

# Mia Floor Plan

In Hillcrest Estates at Mountain Top from \$400,900



MIA 2ND FLOOR PLAN  
STARTING AT 1928 SF