






Nittany Floor Plan

In Hillcrest Estates at Mountain Top from \$405,900

PLAN DETAILS

Pricing from \$405,900

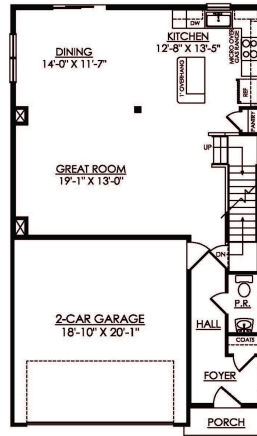
-  4 Beds
-  2.5 Baths
-  2,081 Sq Ft
-  2 Story
-  2 Car Garage



With an open-concept design, the Nittany is perfect for entertaining and daily living. The Kitchen, Great Room, and Dining Room are all connected, so you can stay engaged with your guests while whipping up delicious meals. The Kitchen includes modern finishes and a large kitchen island that provides extra seating for casual dining. Take the stairs to the second floor and you'll find a spacious four-bedroom layout. Unwind in your roomy Owner's Suite that includes a walk-in closet and private Bath. Three more Bedrooms, including one that could double as a study, a Full Bath, and a second floor Laundry Room complete the Nittany's well-designed layout. Some images, videos, virtual tours shown may be from a previously built Tuskes home of similar design. Actual options, colors, and selections may vary. [Read More at tuskeshomes.com](#)

Nittany Floor Plan

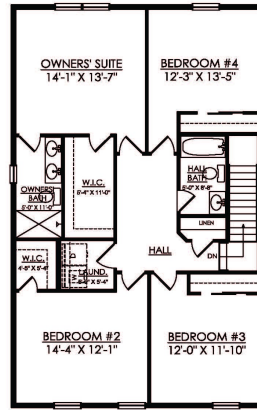
In Hillcrest Estates at Mountain Top from \$405,900



NITTANY 1ST FLOOR PLAN
STARTING AT 2081 SF

Nittany Floor Plan

In Hillcrest Estates at Mountain Top from \$405,900



NITTANY 2ND FLOOR PLAN
STARTING AT 2081 SF