

3244 Michaels School Rd #2

Nazareth, PA 18064

HOME DETAILS

4 Beds 5.0 Baths 4,253 Sq Ft

2 Story 3 Car Garage



Exterior

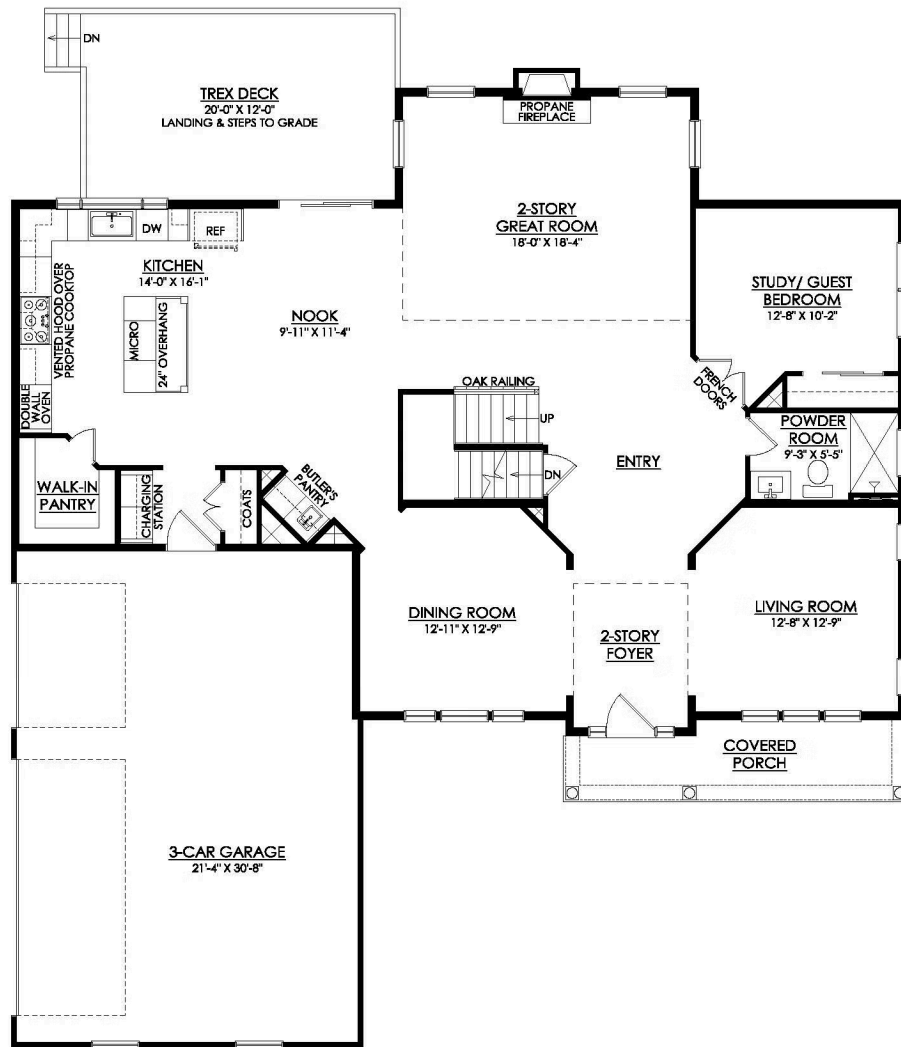
Elevate your lifestyle with the Juniper, offering the perfect balance of privacy and comfort on spacious 2.5 acres of gorgeous land. An impressive two-story Foyer sets the tone for this home's spacious open-concept main living area. The Kitchen is a cook's dream, with an expanded island, a walk-in pantry, and a butler's pantry for serving drinks or snacks. The airy 2-story Great Room bo... Read More at tuskeshomes.com

HOME FEATURES

- 4 Bedrooms
- 3.5 Baths
- 3-Car Garage
- Grand Owner's Suite including Large Walk-In Closet and Private Bath with Shower Tile to Ceiling
- 2-Story Foyer and Great Room
- Open-Concept Nook and Kitchen with Silestone Countertops, Tile Backsplash, and Additional Lighting Package
- 9' Partially Finished Daylight Basement with Drop Ceiling and Full Bath
- Oak Railings with Square Newel Posts and Wrought Iron Balusters
- Additional Lighting Packages in Kitchen and Owner's Bedroom
- 12' x 20' Trex Deck with White Vinyl Railings and Steps to Grade
- Spacious 2.5 Acres Homesite

3244 MICHAELS SCHOOL RD #2

Nazareth, PA 18064



JUNIPER FARMHOUSE

1ST FLOOR PLAN

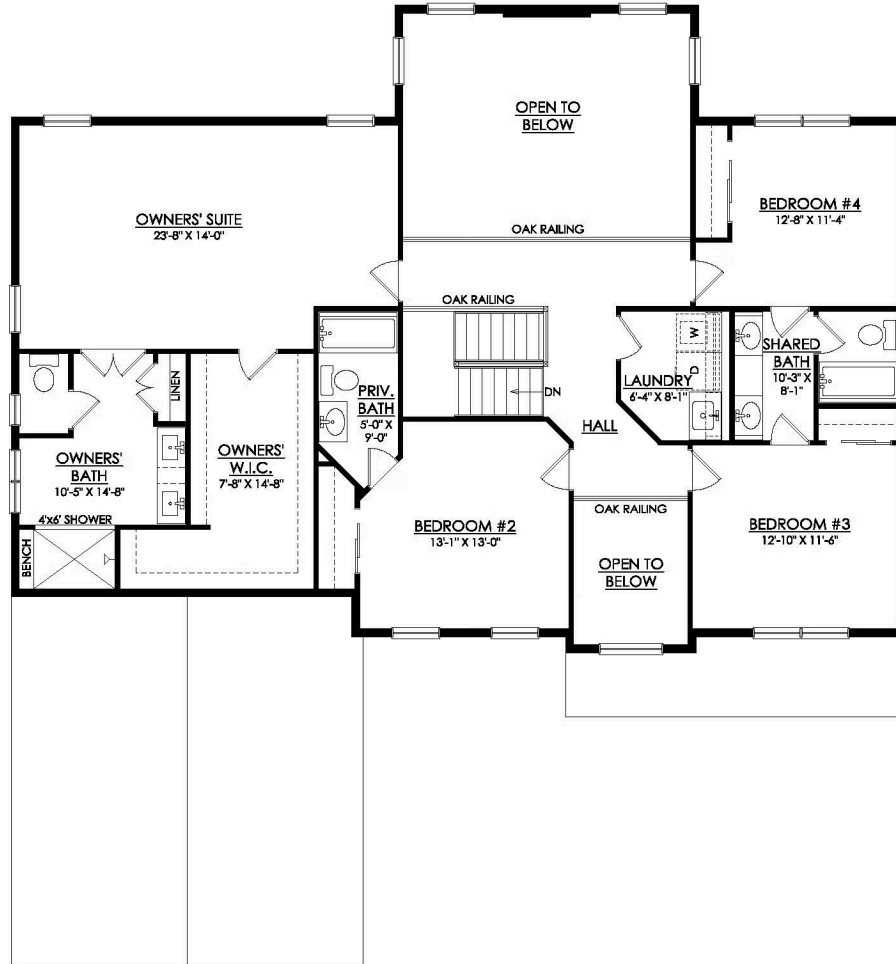
OV-02

3244 MICHAELS SCHOOL RD

4253 SF

3244 MICHAELS SCHOOL RD #2

Nazareth, PA 18064



JUNIPER FARMHOUSE

2ND FLOOR PLAN

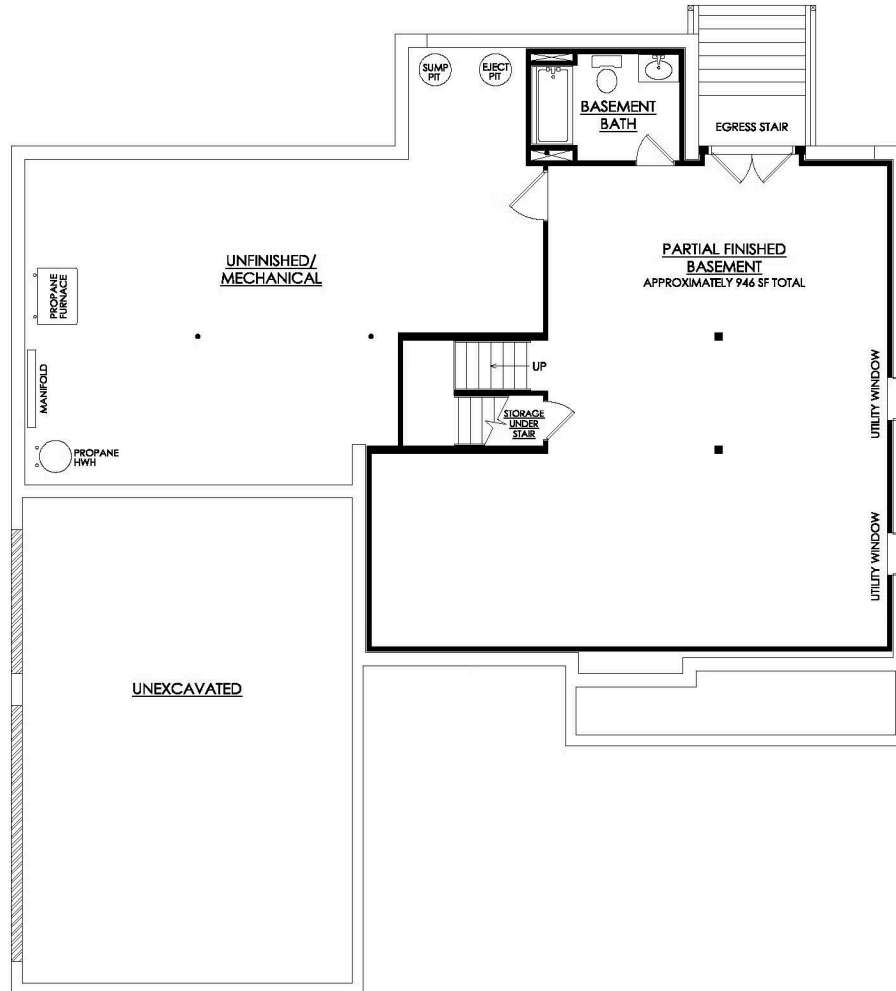
OV-02

3244 MICHAELS SCHOOL RD

4253 SF

3244 MICHAELS SCHOOL RD #2

Nazareth, PA 18064



JUNIPER FARMHOUSE

FINISHED BASEMENT PLAN

OV-02

3244 MICHAELS SCHOOL RD

946 SF FINISHED BASEMENT

4253 SF