

Churchill Floor Plan

In Overlook Estates from \$854,900

PLAN DETAILS

Pricing from \$854,900

- 4 Beds
 2.5 Baths
 3,060 Sq Ft
- 2 Story
 2 Car Garage



Farmhouse Elevation - Side Entry Garage

Discover the perfect family home in The Churchill! This beauty offers over 3000 sq ft of living space of elegance and comfort. The 2-story Great Room sets the tone of this open-concept floorplan, while the living room provides a warm and inviting space for gatherings. The gourmet Kitchen, complete with Dining Nook leading to the backyard, is a chef's dream with ample countertop space and a large island with room for seating. A formal dining room and study complete the main level. The second floor boasts a luxurious Owner's Suite with private Bath. Three additional Bedrooms, a shared hall Bath, and a conveniently located 2nd floor Laundry Room can also be found upstairs. Some images, videos, virtual tours shown may be from a previously built Tuskes home of similar design. Actual options ... Read More at tuskeshomes.com

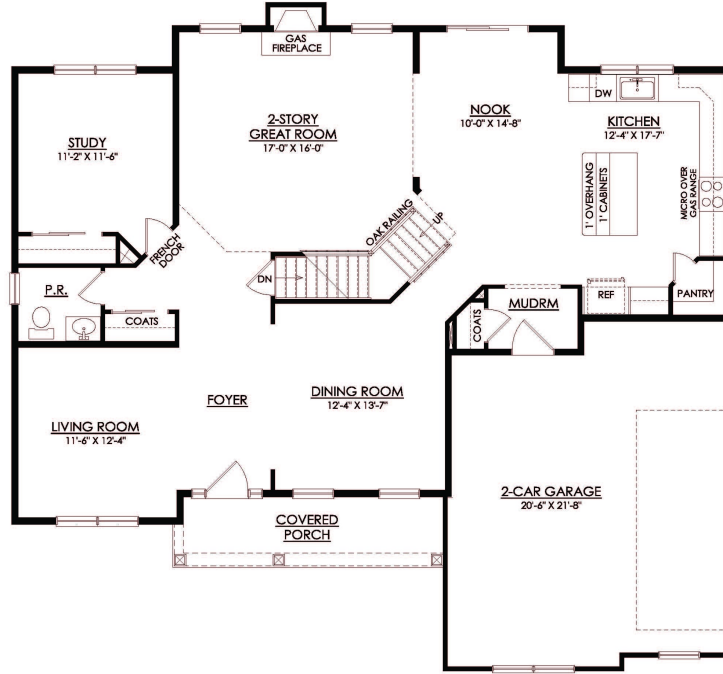
Churchill Floor Plan

In Overlook Estates from \$854,900



Churchill Floor Plan

In Overlook Estates from \$854,900



CHURCHILL FARMHOUSE
OVERLOOK ESTATES
STARTING AT 3060 SF

1ST FLOOR PLAN

Churchill Floor Plan

In Overlook Estates from \$854,900

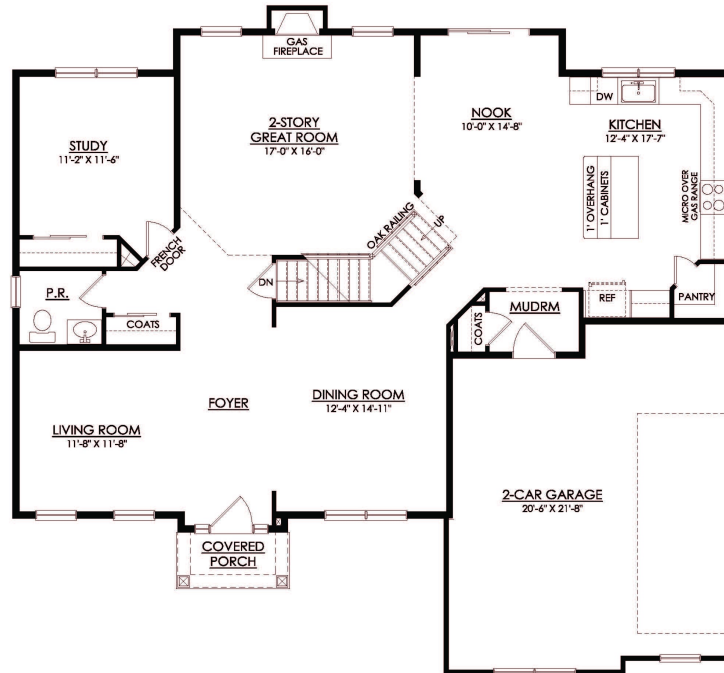


CHURCHILL FARMHOUSE
OVERLOOK ESTATES
STARTING AT 3060 SF

2ND FLOOR PLAN

Churchill Floor Plan

In Overlook Estates from \$854,900

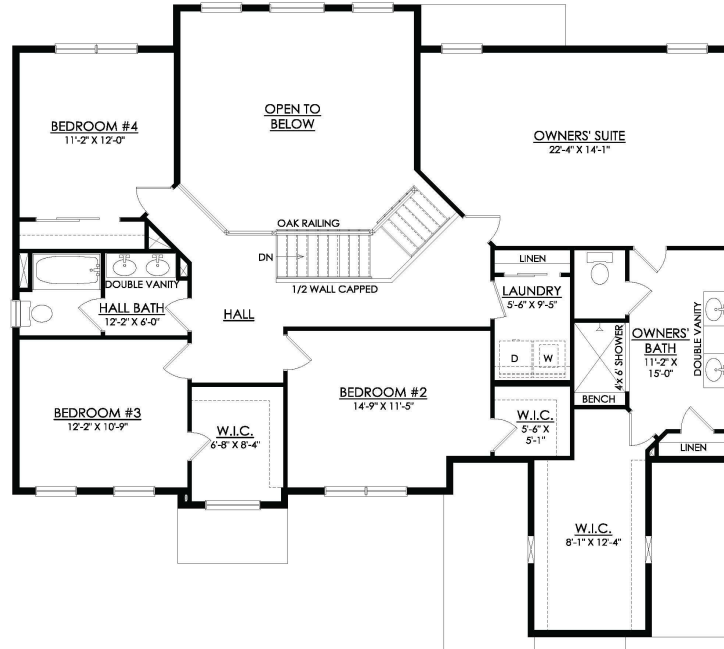


CHURCHILL TRADITIONAL
OVERLOOK ESTATES
STARTING AT 3110 SF

1ST FLOOR PLAN

Churchill Floor Plan

In Overlook Estates from \$854,900



CHURCHILL TRADITIONAL
OVERLOOK ESTATES
STARTING AT 3110 SF

2ND FLOOR PLAN