

Maverick Floor Plan

In Overlook Estates from **\$994,900**

PLAN DETAILS

Pricing from **\$994,900**

5 Beds 4.5 Baths 4,133 Sq Ft

2 Story 3 Car Garage



Traditional Elevation

The Maverick is an architectural gem that embodies modern farmhouse style with its spacious 4100 sq ft. floor plan. Ideal for multi-generational living, this home boasts multiple common areas and bedrooms on both floors, allowing for maximum comfort and convenience. Its sleek, contemporary design seamlessly integrates function and style, making it the perfect place for families to create lasting memories. Step into the charming Foyer and be welcomed into its magnificent living spaces. The Kitchen features ample counter space, a large island with seating, and a walk-in Pantry. The nearby Great Room is anchored by a cozy gas fireplace, windows with backyard views, and opens to a formal Dining Room. The Family Room is a luxurious escape with cathedral ceilings, a sliding door leading to ... Read More at tuskeshomes.com

PLAN FEATURES

5 Bedrooms
4.5 Bathrooms
3-Car Garage
Starting at 4133 Square Feet
Granite or Quartz Kitchen Countertops
Stainless Steel Double Oven, Range,
Microwave, and Dishwasher
Great Room with Gas Fireplace

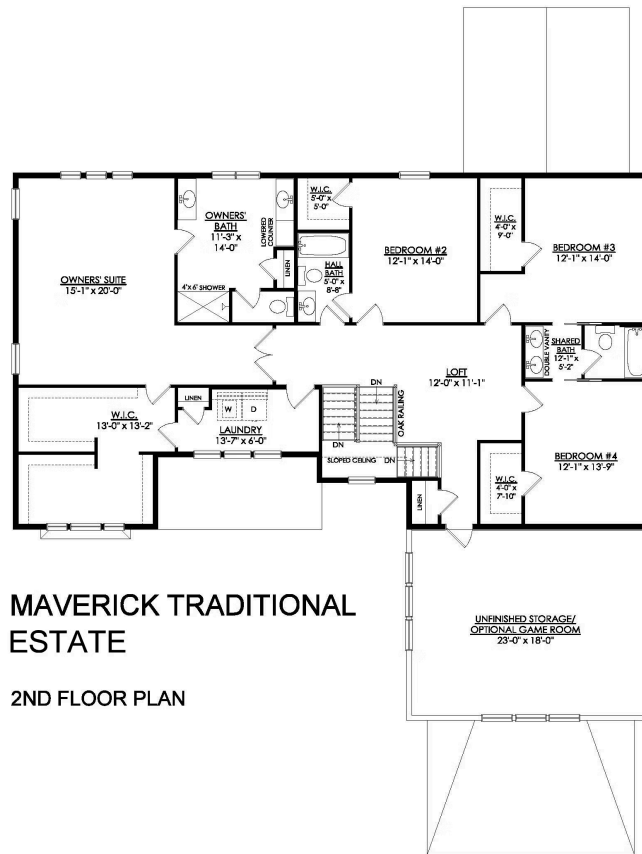
Maverick Floor Plan

In Overlook Estates from \$994,900



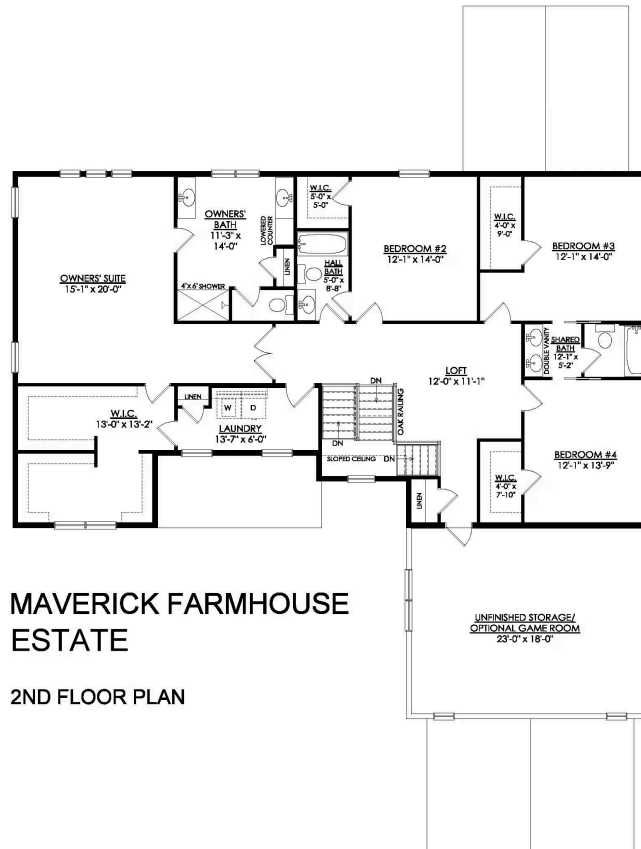
Maverick Floor Plan

In Overlook Estates from \$994,900



Maverick Floor Plan

In Overlook Estates from \$994,900

MAVERICK FARMHOUSE
ESTATE

2ND FLOOR PLAN



Maverick Floor Plan

In Overlook Estates from **\$994,900**



Maverick Floor Plan

In Overlook Estates from **\$994,900**



Maverick Floor Plan

In Overlook Estates from **\$994,900**



Maverick Floor Plan

In Overlook Estates from **\$994,900**



Maverick Floor Plan

In Overlook Estates from **\$994,900**



Maverick Floor Plan

In Overlook Estates from **\$994,900**



Maverick Floor Plan

In Overlook Estates from **\$994,900**