






4450 Maple Street #2

Schnecksville, PA 18078

HOME DETAILS

-  4 Beds
-  3.5 Baths
-  3,141 Sq Ft
-  2 Story
-  2 Car Garage



GM-02 Traditional
Elevation

Experience luxury living the Breckenridge Grande, offering over 3000 sq ft of living space on a 1-acre. Entertain in the stunning 2-story Great Room or relax in the nearby Living Room. The enormous kitchen features ample counter space and storage, with several configuration options to fit your lifestyle. The Dining Room is perfect for formal dinners while the Study offers a quiet place ...
[Read More at tuskeshomes.com](http://tuskeshomes.com)

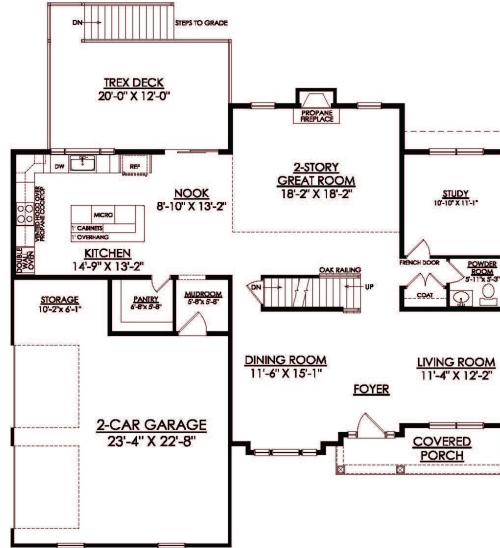
HOME FEATURES

- 4 Bedrooms
- 3.5 Bathrooms
- 2-Car Garage
- 3141 Square Feet
- Spacious 1-Acre Homesite
- 9' Walkout Basement with 1 Window and Sliding Glass Door
- 12' x 20' Trex Deck with White Vinyl Railing and Steps to Grade
- Expanded Pantry
- Expanded Kitchen Island with Quartz Countertops
- Stainless Steel Range/Oven, Microwave, and Dishwasher
- Private Owner's Suite with Sitting Area
- 2nd Floor Laundry Room
- Mudroom

All prices, promotions, features, floor plans, elevations and dimensions are subject to change without notice.

4450 MAPLE STREET #2

Schnecksville, PA 18078

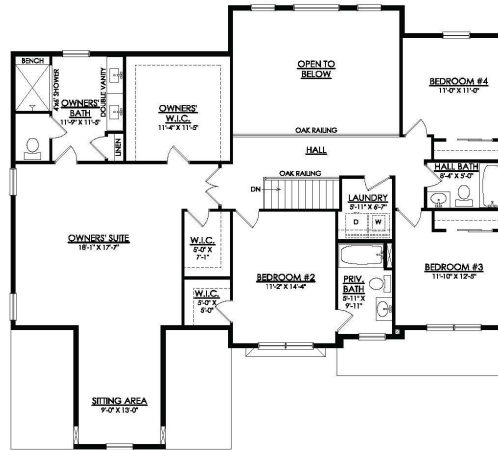


**BRECKENRIDGE GRANDE
TRADITIONAL**
MAPLE STREET AT GREENLEAF FIELDS LOT 02
3141 SF

1ST FLOOR PLAN

4450 MAPLE STREET #2

Schnecksville, PA 18078



**BRECKENRIDGE GRANDE
TRADITIONAL**
MAPLE STREET AT GREENLEAF FIELDS LOT 02
3141 SF

2ND FLOOR PLAN