

# Churchill Floor Plan

In Greenleaf Fields at Parkland from **\$799,900**

## PLAN DETAILS

Pricing from **\$799,900**

4 Beds 2.5 Baths 3,060 Sq Ft

2 Story 2 Car Garage



Farmhouse Elevation - Side Entry Garage

Discover the perfect family home in The Churchill! This beauty offers over 3000 sq ft of living space of elegance and comfort. The 2-story Great Room sets the tone of this open-concept floorplan, while the living room provides a warm and inviting space for gatherings. The gourmet Kitchen, complete with Dining Nook leading to the backyard, is a chef's dream with ample countertop space and a large island with room for seating. A formal dining room and study complete the main level. The second floor boasts a luxurious Owner's Suite with private Bath. Three additional Bedrooms, a shared hall Bath, and a conveniently located 2nd floor Laundry Room can also be found upstairs. Some images, videos, virtual tours shown may be from a previously built Tuskes home of similar design. Actual options ...  
Read More at [tuskeshomes.com](https://tuskeshomes.com)

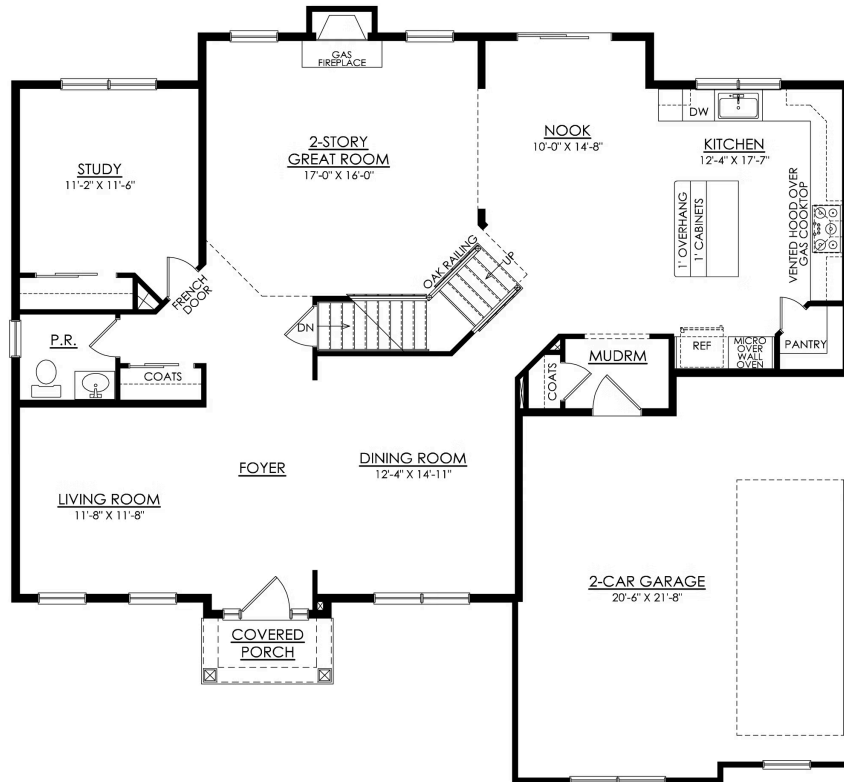
# Churchill Floor Plan

In Greenleaf Fields at Parkland from **\$799,900**



# Churchill Floor Plan

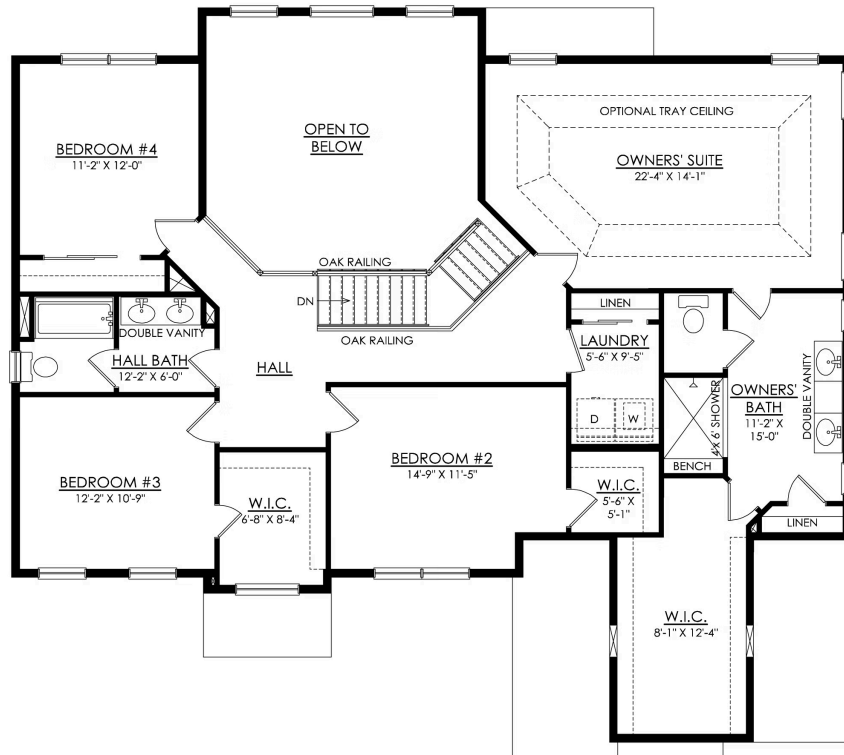
In Greenleaf Fields at Parkland from **\$799,900**



**CHURCHILL TRADITIONAL**  
1ST FLOOR PLAN  
ESTATE

# Churchill Floor Plan

In Greenleaf Fields at Parkland from **\$799,900**



**CHURCHILL TRADITIONAL**  
2ND FLOOR PLAN  
ESTATE



# Churchill Floor Plan

In Greenleaf Fields at Parkland from **\$799,900**



# Churchill Floor Plan

In Greenleaf Fields at Parkland from **\$799,900**





# Churchill Floor Plan

In Greenleaf Fields at Parkland from **\$799,900**



# Churchill Floor Plan

In Greenleaf Fields at Parkland from **\$799,900**





# Churchill Floor Plan

In Greenleaf Fields at Parkland from **\$799,900**



# Churchill Floor Plan

In Greenleaf Fields at Parkland from **\$799,900**