

Folino Floor Plan

In Greenleaf Fields at Parkland from **\$694,900**

PLAN DETAILS

Pricing from **\$694,900**

3 Beds 2.0 Baths 2,134 Sq Ft

1 Story 2 Car Garage



Craftsman Elevation - Side Entry

The Folino is an elegant ranch-style home with a well-planned design and alluring exterior. Step into the welcoming Foyer and continue to a private Study, two Bedrooms, and shared Hall Bath that set the tone for this sophisticated abode. The heart of this home is the open-concept Great Room, Kitchen, and Dining Room that making entertaining an effortless experience. The Kitchen boasts a large island with an overhang, offering ample seating for guests, a convenient corner pantry, and plenty of countertop space. The Great Room is bathed in natural light and leads to your backyard through a sliding door. Relax in style in your very own private haven as you enter the Owner's Suite, boasting a spacious walk-in closet and a luxurious ensuite Bath with a double vanity, linen closet, large shower, ... Read More at tuskeshomes.com

Folino Floor Plan

In Greenleaf Fields at Parkland from **\$694,900**



Folino Floor Plan

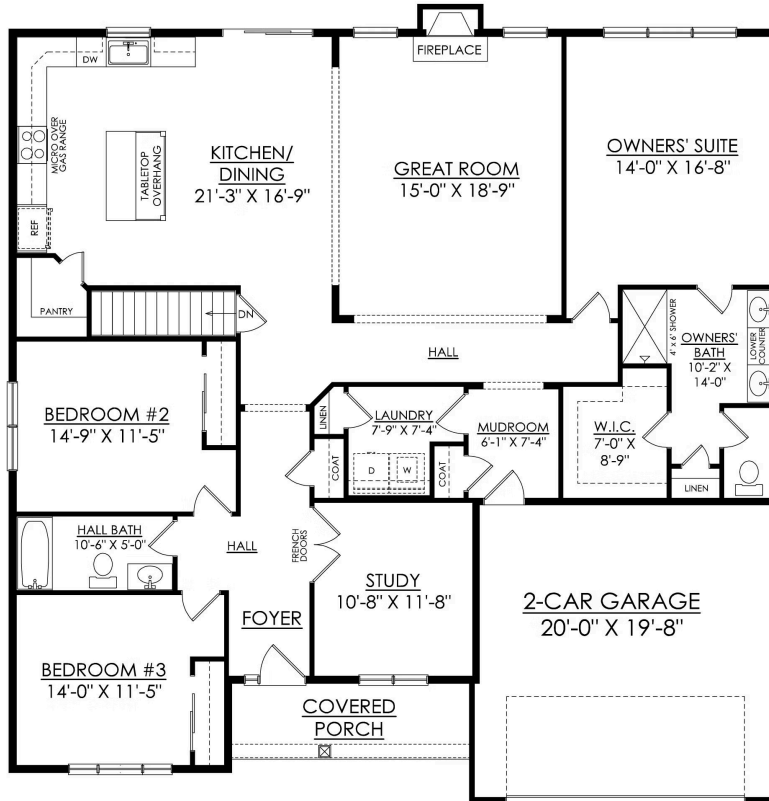
In Greenleaf Fields at Parkland from **\$694,900**



FOLINO COTTAGE
RIVERVIEW ESTATES
STARTING AT 2134 SF

Folino Floor Plan

In Greenleaf Fields at Parkland from \$694,900



**FOLINO CRAFTSMAN
RIVERVIEW ESTATES
STARTING AT 2134 SF**