

Juniper Floor Plan

In Greenleaf Fields at Parkland from \$834,900

PLAN DETAILS

Pricing from \$834,900

4 Beds
 3.5 Baths
 3,307 Sq Ft
 2 Story
 2 Car Garage



Farmhouse Elevation - Side Entry Garage

Elevate your lifestyle with the Juniper, offering the perfect balance of privacy and comfort for you and your family. An impressive two-story Foyer sets the tone for this home's spacious open-concept main living area. The Kitchen is a cook's dream, with an expanded island, a walk-in pantry, and a butler's pantry for serving drinks or snacks. The airy 2-story Great Room boasts a gas fireplace and plenty of windows for natural light. A private Study and Powder Room complete the 1st floor layout. Head up the open staircase to find an enormous Owner's Suite with sitting area, a walk-in closets, and private Owner's Bath. Additionally, a Guest Suite with its own Bath, two additional Bedrooms that share a Jack-n-Jill bath, and a convenient 2nd floor laundry room can also be found on the 2nd ... Read More at tuskeshomes.com

PLAN FEATURES

- 4 Bedrooms
- 3.5 Bathrooms
- 2-Car Garage
- Starting at 3307 Square Feet
- Kitchen with Granite or Quartz Countertops
- Stainless Steel Range/Oven, Microwave, and Dishwasher
- Butler's Pantry
- Walk-In Pantry
- Two-Story Great Room
- Two-Story Foyer

Juniper Floor Plan

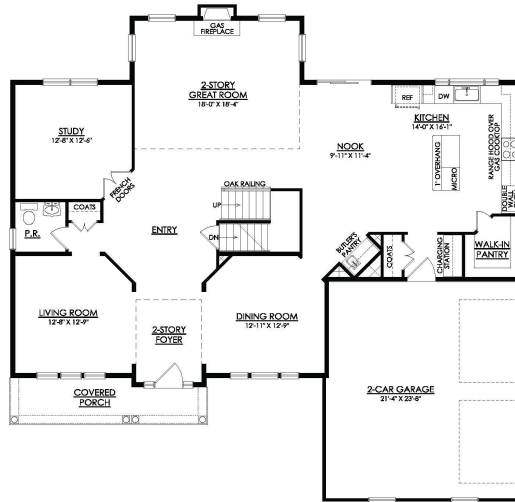
In Greenleaf Fields at Parkland from \$834,900



Traditional Elevation - Side Entry Garage

Juniper Floor Plan

In Greenleaf Fields at Parkland from \$834,900



JUNIPER FARMHOUSE
1ST FLOOR PLAN

Juniper Floor Plan

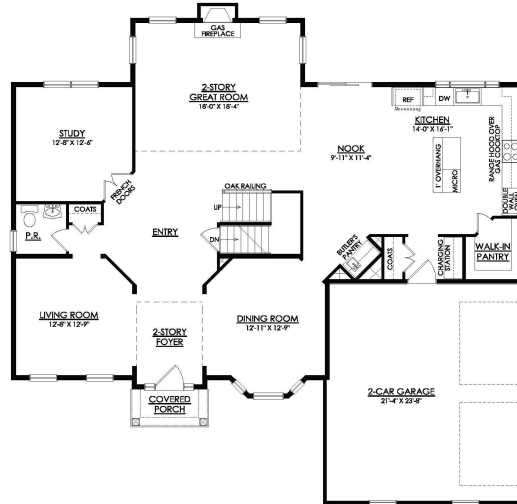
In Greenleaf Fields at Parkland from \$834,900



JUNIPER FARMHOUSE
2ND FLOOR PLAN

Juniper Floor Plan

In Greenleaf Fields at Parkland from \$834,900



JUNIPER TRADITIONAL
1ST FLOOR PLAN

Juniper Floor Plan

In Greenleaf Fields at Parkland from \$834,900



JUNIPER TRADITIONAL
2ND FLOOR PLAN