

Meridian Floor Plan

In Greenleaf Fields at Parkland from \$744,900

PLAN DETAILS

Pricing from \$744,900

- 4 Beds
- 2.5 Baths
- 2,820 Sq Ft
- 2 Story
- 2 Car Garage



Craftsman Elevation - Side Entry Garage

Step into opulence with The Meridian, a stunning floorplan starting at 2820 sq ft. The Kitchen boasts a large island with seating, granite or quartz countertops, and a dining Nook surrounded by windows. The main level also includes a spacious Great Room, formal Dining Room, Private Study with French doors, Powder Room, Mudroom, and welcoming Foyer. Upstairs, the Owner's Suite features double doors and 2 walk-in closets with an attached Owner's Bath. 3 additional bedrooms, a shared hall bath, and a 2nd floor Laundry Room complete the layout. For even more space, consider the optional Bonus Room above the Garage, perfect for a 5th Bedroom, second Home Office, or Play Room. Some images, videos, virtual tours shown may be from a previously built Tuskes home of similar design. Actual option ... Read More at tuskeshomes.com

Meridian Floor Plan

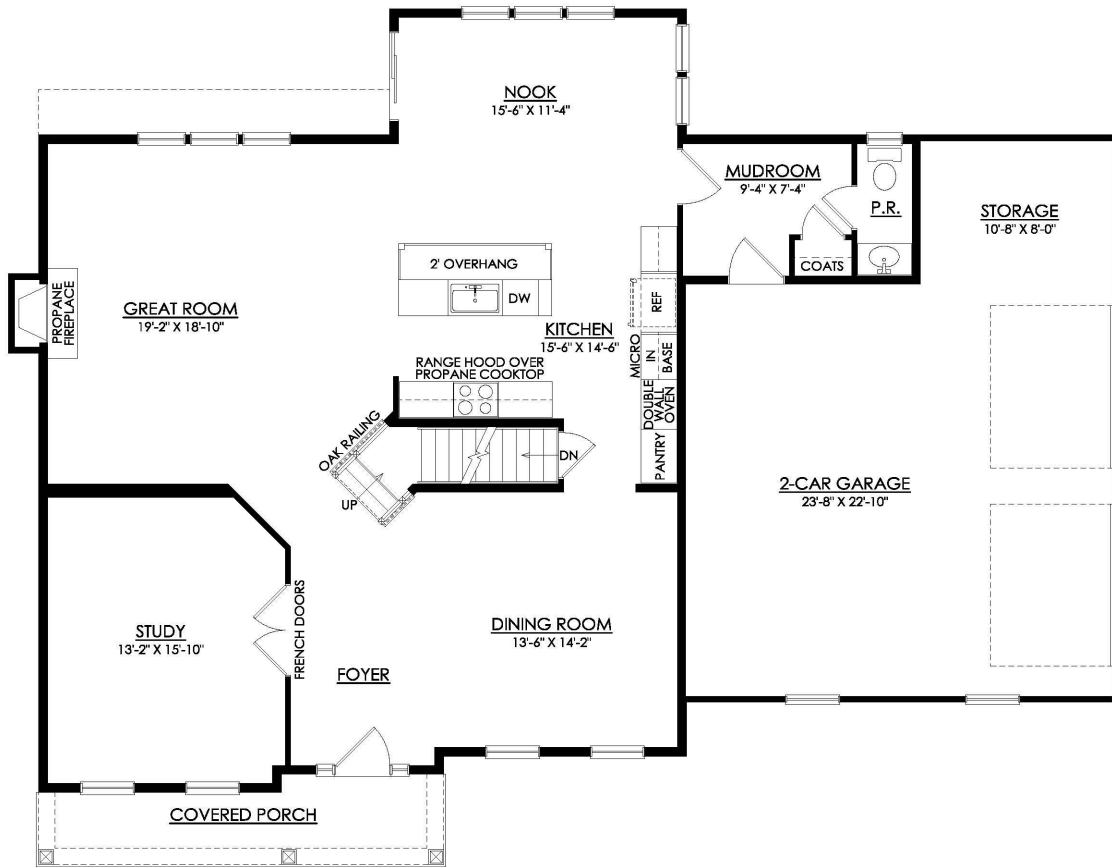
In Greenleaf Fields at Parkland from \$744,900



Farmhouse Elevation - Side Entry Garage

Meridian Floor Plan

In Greenleaf Fields at Parkland from \$744,900

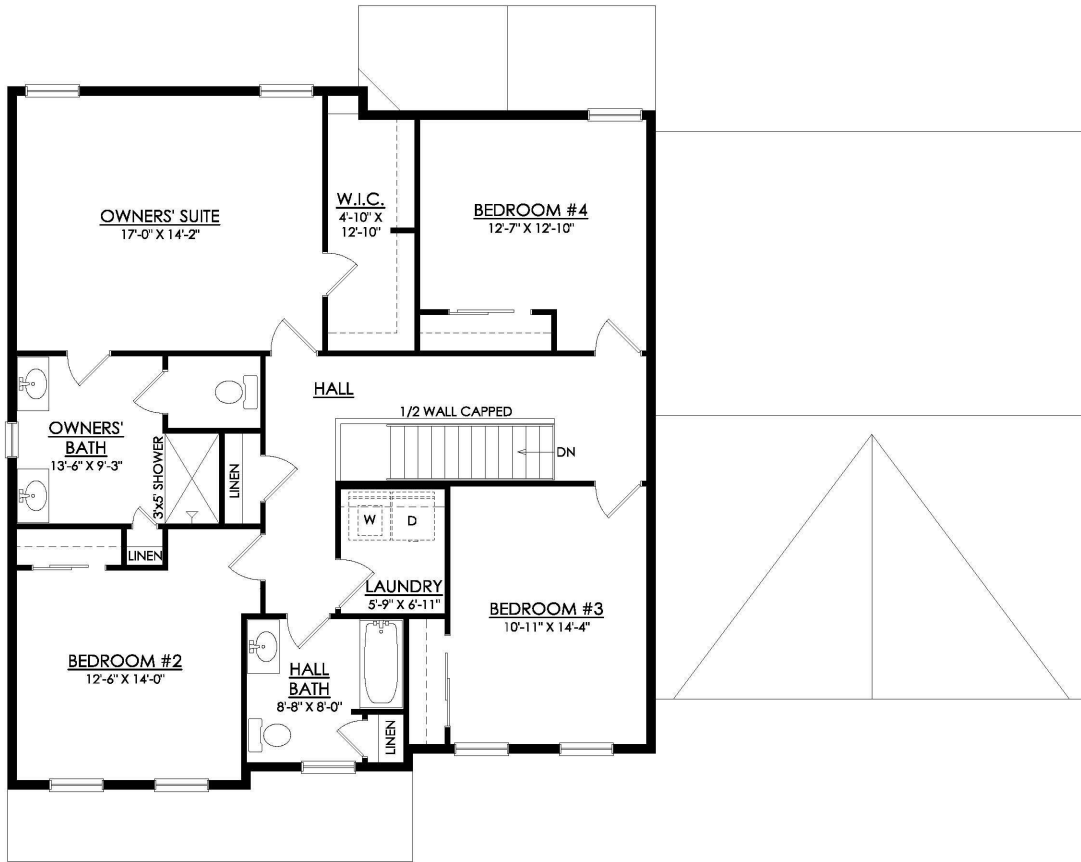


MERIDIAN CRAFTSMAN
STARTING AT 2848 SF
MAPLE STREET AT GREENLEAF

1ST FLOOR PLAN

Meridian Floor Plan

In Greenleaf Fields at Parkland from \$744,900

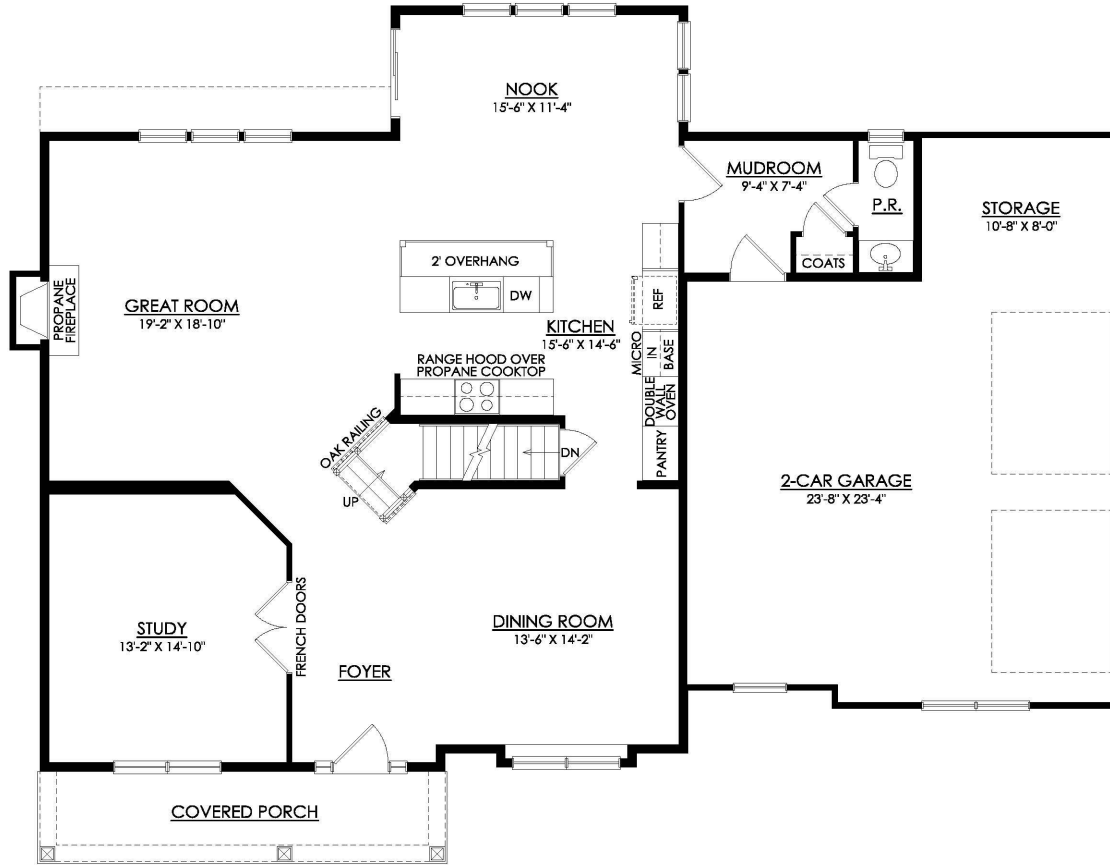


MERIDIAN CRAFTSMAN
STARTING AT 2848 SF
MAPLE STREET AT GREENLEAF

2ND FLOOR PLAN

Meridian Floor Plan

In Greenleaf Fields at Parkland from \$744,900

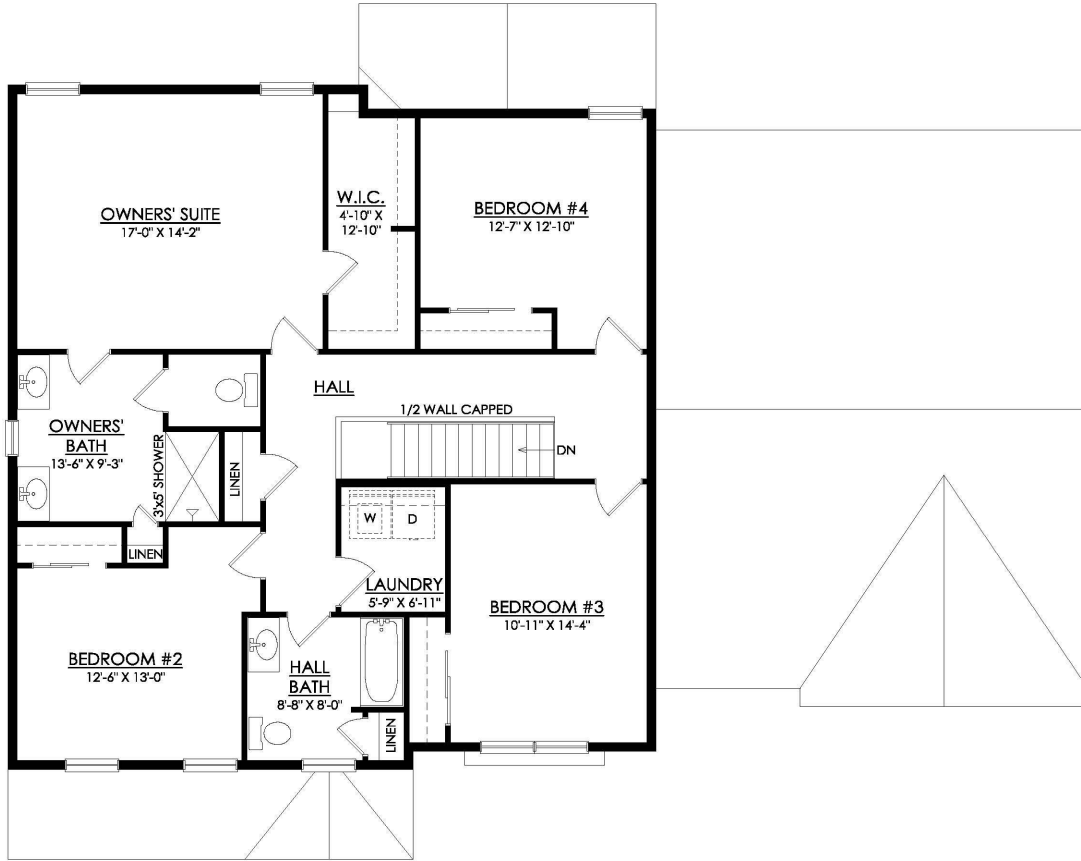


MERIDIAN FARMHOUSE
STARTING AT 2820 SF
MAPLE STREET AT GREENLEAF

1ST FLOOR PLAN

Meridian Floor Plan

In Greenleaf Fields at Parkland from \$744,900



MERIDIAN FARMHOUSE
STARTING AT 2820 SF
MAPLE STREET AT GREENLEAF

2ND FLOOR PLAN

Meridian Floor Plan

In Greenleaf Fields at Parkland from \$744,900

