

Preakness Floor Plan

In Greenleaf Fields at Parkland from **\$869,900**

PLAN DETAILS

Pricing from **\$869,900**

4 Beds 3.5 Baths 3,763 Sq Ft

2 Story 3 Car Garage



Traditional Elevation

The Preakness floorplan offers luxury and grandeur in a magnificent layout with over 3700 sq ft of living space. Step into the awe-inspiring two-story Foyer and Great Room, each with their own staircase. The Kitchen features a stunning island complete with an overhang bar that's perfect for entertaining. The walk-in pantry and optional butler's pantry are conveniently located, ready to store all your culinary essentials. The adjacent dining Nook includes a sliding patio door that opens to the backyard, inviting the outdoors in for al fresco dining and unforgettable memories. A formal Dining Room, Living Room, private Study, and Powder Room complete the main living areas of this home. Upstairs, Soak in the lavishness of the private Owner's Suite which features a dressing area, spacious walk- ... Read More at tuskeshomes.com

PLAN FEATURES

Preakness Floor Plan

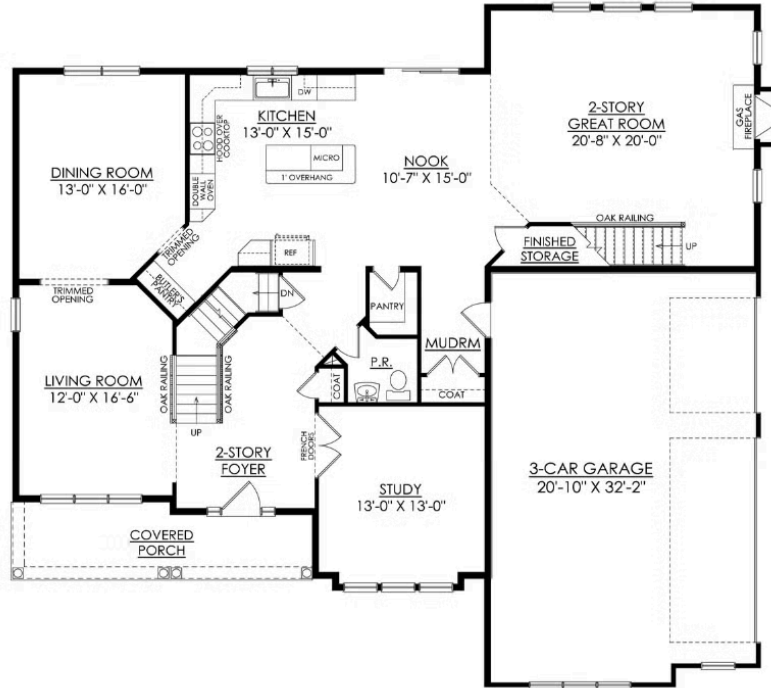
In Greenleaf Fields at Parkland from **\$869,900**



Farmhouse Elevation

Preakness Floor Plan

In Greenleaf Fields at Parkland from **\$869,900**



PREAKNESS FARMHOUSE
STARTING AT 3763 SF

1ST FLOOR PLAN

Preakness Floor Plan

In Greenleaf Fields at Parkland from \$869,900



PREAKNESS FARMHOUSE
STARTING AT 3763 SF

2ND FLOOR PLAN



Preakness Floor Plan

In Greenleaf Fields at Parkland from **\$869,900**



Preakness Floor Plan

In Greenleaf Fields at Parkland from **\$869,900**