

371 Main Street

Easton, PA 18040

HOME DETAILS

- 4 Beds 3.5 Baths 2,448 Sq Ft
- 2 Story 2 Car Garage



Move-in Ready Nazareth Area School District! This Birchwood located in Tatamy Borough is perfectly designed for those looking for both comfort and style. With an open-concept floorplan, entertaining guests in this home is easy and enjoyable. The Kitchen features plenty of counter space and a spacious island with seating, making meal prep and hosting a breeze. The connected Great Room and ... Read More at tuskeshomes.com

HOME FEATURES

- 4 Bedrooms
- 3.5 Baths
- 2-Car Side-Entry Garage
- 8' Fully Finished Walkout Basement with Full Bath
- 12'x12' Trex Deck with White Railings
- GE Stainless Steel Appliance Package Included
- Luxury Vinyl Plank Flooring Throughout Home

371 MAIN STREET

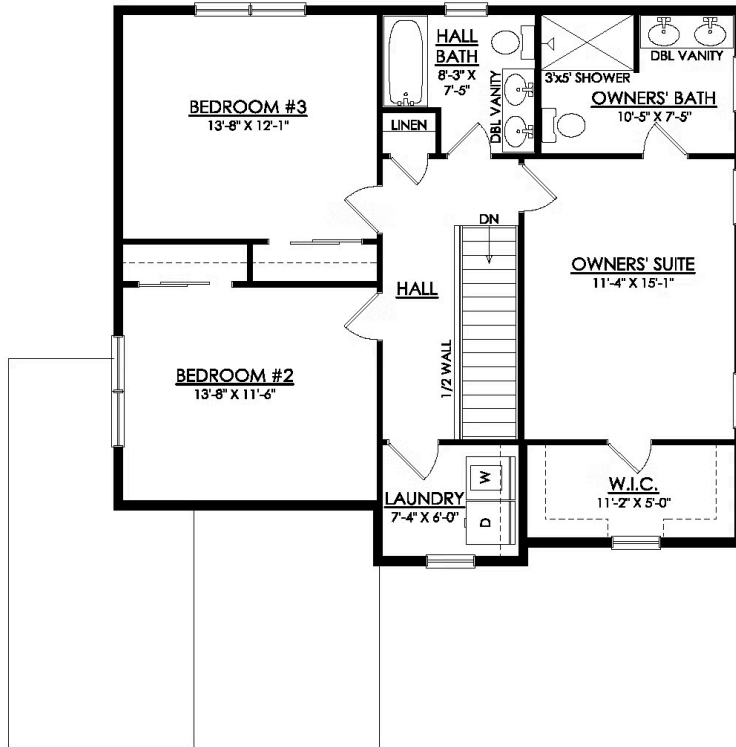
Easton, PA 18040



BIRCHWOOD
1ST FLOOR PLAN
TF81

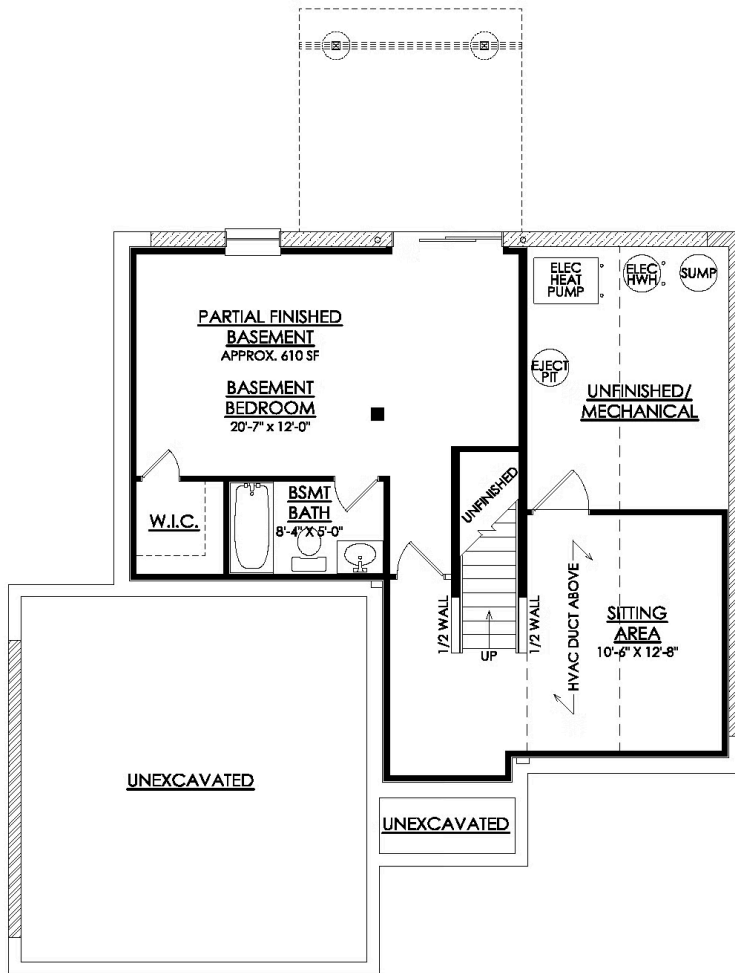
371 MAIN STREET

Easton, PA 18040



BIRCHWOOD
2ND FLOOR PLAN
TF81

371 MAIN STREET
Easton, PA 18040



BIRCHWOOD
FINISHED BASEMENT PLAN
TF81